

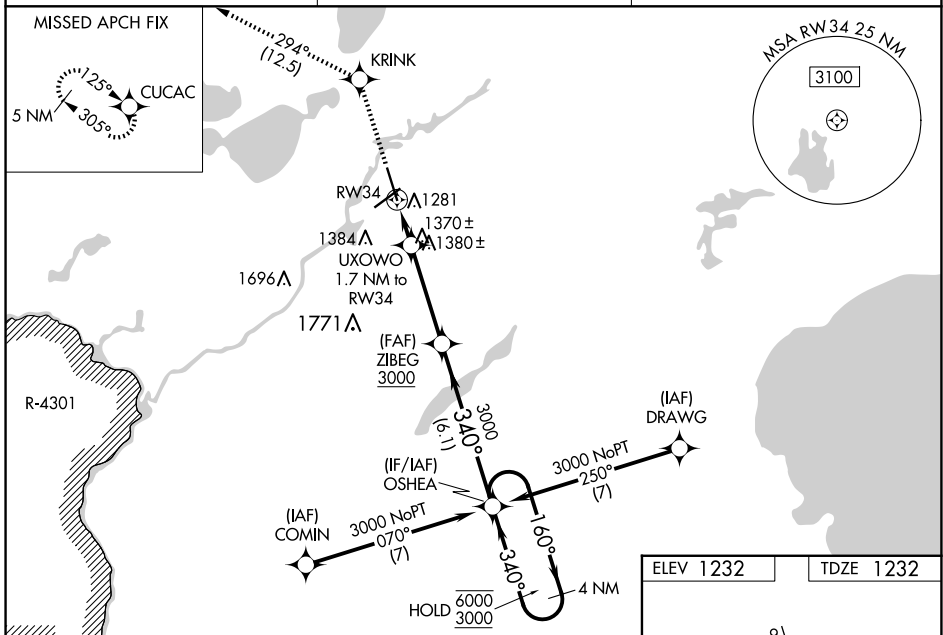
WAAS CH 70711 W34A	APP CRS 340°	Rwy Idg 7100
		TDZE 1232
		Apt Elev 1232

RNAV (GPS) RWY 34

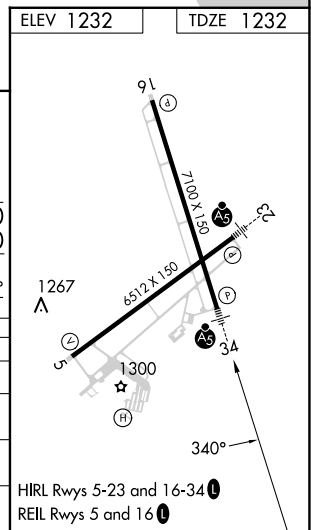
BRAINERD LAKES RGNL (BRD)

RNP APCH - GPS.		MALSR
<p>⚠ For uncompensated Baro-VNAV systems, LNAV/VNAV NA below -21°C or above 54°C. Baro-VNAV and VDP NA when using AIT altimeter setting. When local altimeter setting not received, use AIT altimeter setting and increase LPV DA to 1484 feet; increase LNAV/VNAV DA to 1578 feet and all visibilities ½ SM. Increase all MDAs 60 feet and LNAV visibility Cat C/D ¼ SM. For inop ALS when using AIT altimeter setting, increase LNAV/VNAV all Cats visibility to 1 SM. For inop ALS increase LNAV/VNAV all Cats visibility to ¾ SM.</p>		MISSED APPROACH: Climb to 3300 direct KRINK and on 294° track to CUCAC and hold.

ASOS 126.775	MINNEAPOLIS CENTER 118.05 239.0	UNICOM 122.7 (CTAF)
------------------------	---	-------------------------------



3300	KRINK	tr 294°	CUCAC	ZIBEG	OSHEA	4 NM Holding Pattern
				3000	160° → 6000	
				1820	← 340°	GP 3.00° TCH 47
					← 340°	
CATEGORY	A	B	C	D		
LPV DA	1432-½		200 (200-½)			
LNAV/VNAV DA	1526-½		294 (300-½)			
LNAV MDA	1620-½ 388 (400-½)		1620-⅝ 388 (400-⅝)			
CIRCLING	1760-1 528 (600-1)		1760-1½ 528 (600-1½)		1840-2 608 (700-2)	



NC-1, 20 MAR 2025 to 17 APR 2025

NC-1, 20 MAR 2025 to 17 APR 2025