

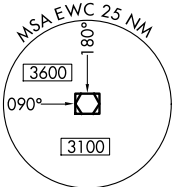
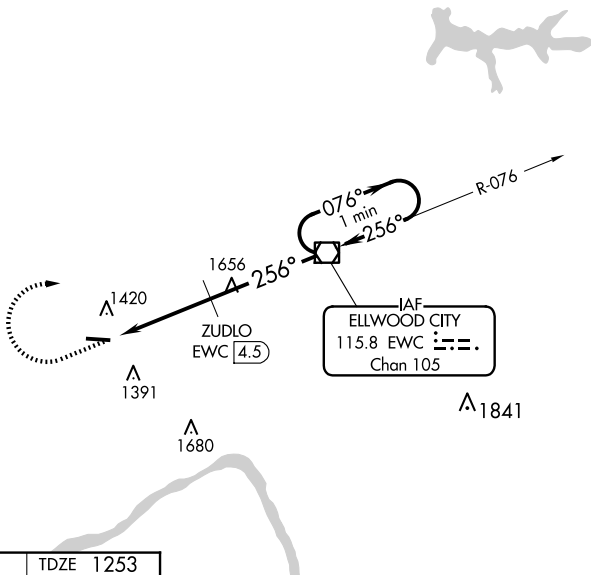
VOR/DME EWC	APP CRS	Rwy Idg	<b>4501</b>
<b>115.8</b>	<b>256°</b>	TDZE	<b>1253</b>
Chan <b>105</b>		Apt Elev	<b>1253</b>

**VOR RWY 28**  
BEAVER COUNTY (BVI)

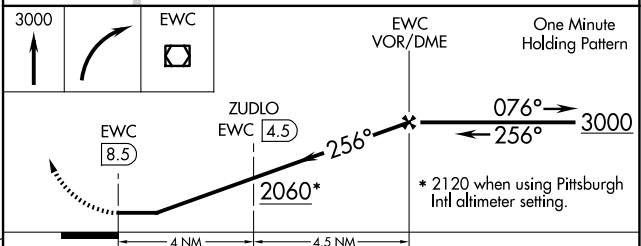
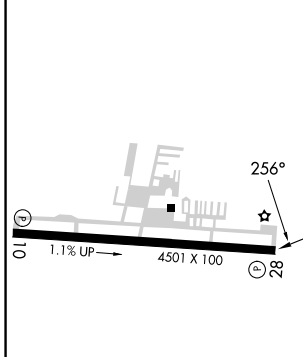
⚠ When local altimeter setting not received, use Pittsburgh Intl altimeter setting and increase MDAs 60 feet and visibility Circling Cats A and D ¼ SM and ZUDLO fix minimums S-28 Cats C/D ¼ SM and Circling Cat C ½ SM. Straight-in Rwy 28 NA at night, Circling Rwy 28 NA at night. Rwy 28 helicopter visibility reduction below 1 SM NA.

MISSED APPROACH: Climb to 3000 then right turn direct EWC VOR/DME and hold.

ATIS <b>118.35</b>	PITTSBURGH APP CON <b>124.75 338.2</b>	BEAVER COUNTY TOWER ★ <b>120.3 (CTAF) ①</b>	GND CON <b>121.8</b>	CLNC DEL <b>124.85</b> (when twr closed)
-----------------------	---	--	-------------------------	--



ELEV 1253	TDZE 1253
-----------	-----------



MIRL Rwy 10-28 ①  
REIL Rwys 10 and 28 ①

FAF to MAP 8.5 NM

Knots	60	90	120	150	180
Min:Sec	8:30	5:40	4:15	3:24	2:50

CATEGORY	A	B	C	D
S-28	2060-1 807 (900-1)	2060-1½ 807 (900-1½)	2060-2½	807 (900-2½)
CIRCLING	2060-2	807 (900-2)	2060-2½	807 (900-2½)
ZUDLO FIX MINIMUMS (DME REQUIRED)				
S-28	1740-1	487 (500-1)	1740-1⅜	487 (500-1⅜)
CIRCLING	1740-1	487 (500-1)	1740-1½	1820-2 487 (500-1½) 567 (600-2)

NE-4, 20 MAR 2025 to 17 APR 2025

NE-4, 20 MAR 2025 to 17 APR 2025