

NDB RWY 31

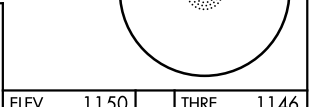
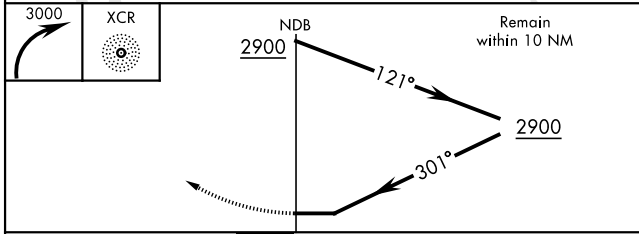
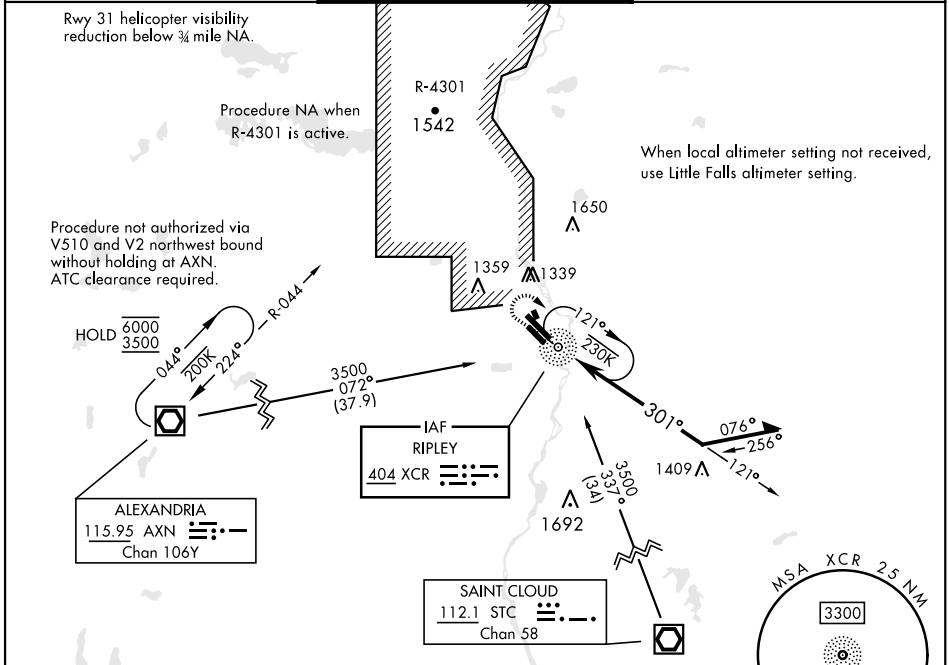
RAY S. MILLER AAF (KRYM)

NDB XCR 404	APCH CRS 301°	Rwy Ldg THRE 6100 1146 Arprt Elev 1150
-----------------------	-------------------------	---

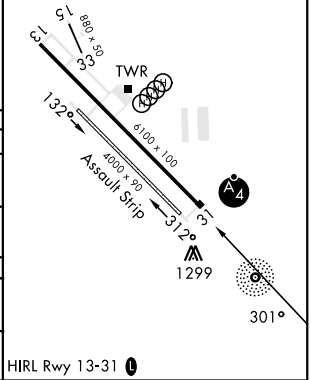
[USA]

<p>▼ *Inop table does not apply to CAT AB. When ALS inop, increase CAT CD vis to 2 miles. ** Inop table does not apply to CAT A. When ALS inop, increase CAT B vis to 1¼ miles, CAT CD vis to 2 miles.</p> <p>▲ NA</p>	<p>MALSF</p>	<p>MISSED APPROACH: Climbing right turn to 3000 in XCR NDB holding pattern.</p>
--	--------------	---

MINNEAPOLIS CENTER 118.05 239.0	TOWER ★ 126.2 254.4	CLNC DEL 126.2
---	-------------------------------	--------------------------



ELEV	1150	THRE	1146
------	------	------	------



CATEGORY	A	B	C	D
S-31*	1860-1 714 (800-1)	1860-1¾ 714 (800-1¾)	1860-2 714 (800-2)	2080-3 930 (1000-3)
LITTLE FALLS ALTIMETER SETTING MINIMUMS				
S-31**	1900-1 754 (800-1)	1900-1¼ 754 (800-1¼)	1900-2¼ 754 (800-2¼)	2120-3 970 (1000-3)

NDB RWY 31

NC-1, 20 MAR 2025 to 17 APR 2025

NC-1, 20 MAR 2025 to 17 APR 2025