

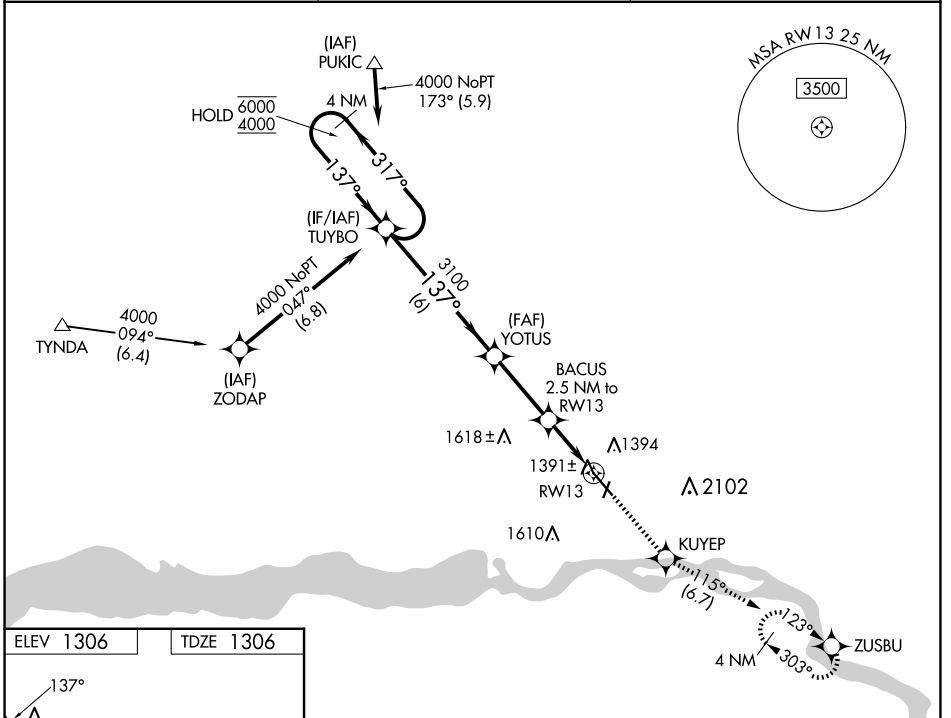
WAAS CH <b>50400</b> <b>W13A</b>	APP CRS <b>137°</b>	Rwy Idg TDZE <b>1306</b> Apt Elev <b>1306</b>	<b>6094</b>
--	------------------------	---	-------------

# RNAV (GPS) RWY 13

CHAN GURNEY MUNI (YKN)

RNP APCH - GPS.	MISSED APPROACH: Climb to 4000 direct KUYEP and on track 115° to ZUSBU and hold, continue climb-in-hold to 4000.
<p>⚠ Circling NA east of Rwy 20 and northeast of Rwy 31.                  ⚠ Rwy 13 helicopter visibility reduction below 3/4 SM NA.</p>	

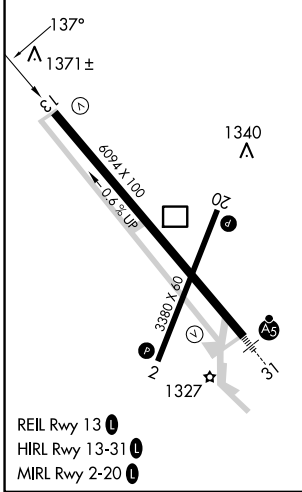
AWOS-3PT <b>119.05</b>	MINNEAPOLIS CENTER <b>125.025 235.625</b>	UNICOM <b>122.8 (CTAF) 0</b>
---------------------------	--	---------------------------------



NC-1, 20 MAR 2025 to 17 APR 2025

NC-1, 20 MAR 2025 to 17 APR 2025

ELEV 1306	TDZE 1306
-----------	-----------



VGSI and RNAV glidepath not coincident (VGSI Angle 3.00/TCH 41).				
4000	KUYEP	ZUSBU		
↑	✧	tr 115°		
4 NM Holding Pattern	TUYBO	YOTUS		
6000 ← 317°	→ 137° 4000	3100		
GP 3.00°	TCH 45	3100		
		2140		
	6 NM	3 NM	1.5 NM	1 NM
CATEGORY	A	B	C	D
LPV DA		1556-3/4	250 (300-3/4)	
LNAV MDA		1660-1	354 (400-1)	
☑ CIRCLING	1760-1 454 (500-1)	1780-1 474 (500-1)	1980-2 674 (700-2)	1980-2 1/4 674 (700-2 1/4)