

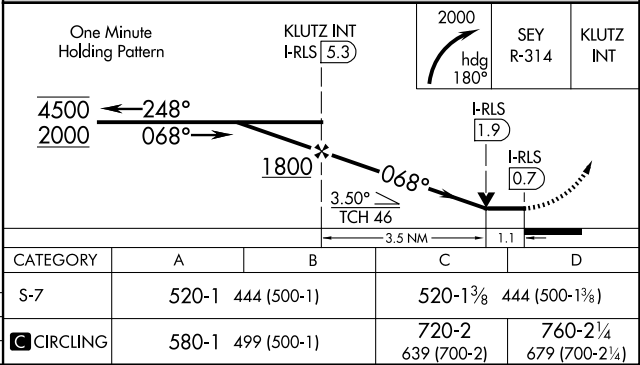
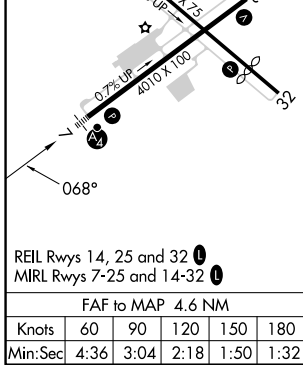
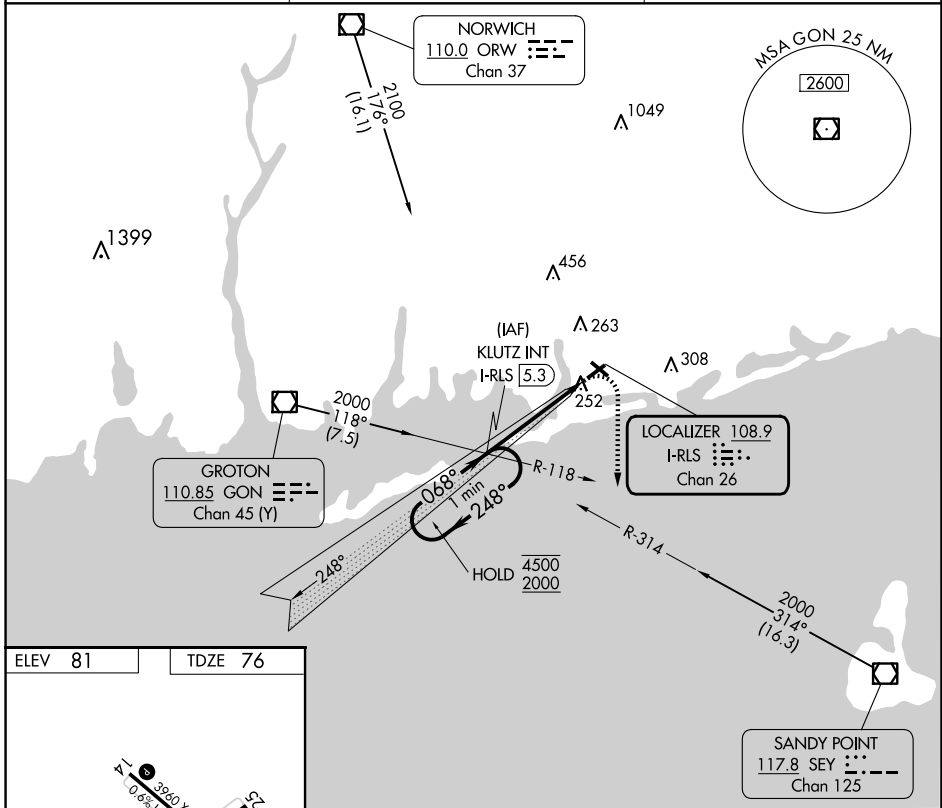
LOC/DME I-RLS <b>108.9</b> Chan 26	APP CRS <b>068°</b>	Rwy Idg TDZE 4010 76 Apt Elev 81
--	------------------------	---

# LOC RWY 7

WESTERLY STATE (WST)

<p><b>NA</b> Circling to Rwy 14 and 32 NA at night. Rwy 7 helicopter visibility reduction below 3/4 SM NA. Inop table does not apply.</p>	<p><b>MALSF</b></p>	<p><b>MISSED APPROACH:</b> Climbing right turn to 2000 on heading 180° and SEY R-314 to KLUTZ INT/I-RLS 5.3 DME and hold, continue climb-in-hold to 2000.</p>
---	---------------------	---

ASOS <b>132.375</b>	PROVIDENCE APP CON * <b>119.45 319.2</b>	UNICOM <b>123.0 (CTAF) 0</b>
------------------------	---	---------------------------------



NE-1, 20 MAR 2025 to 17 APR 2025

NE-1, 20 MAR 2025 to 17 APR 2025