

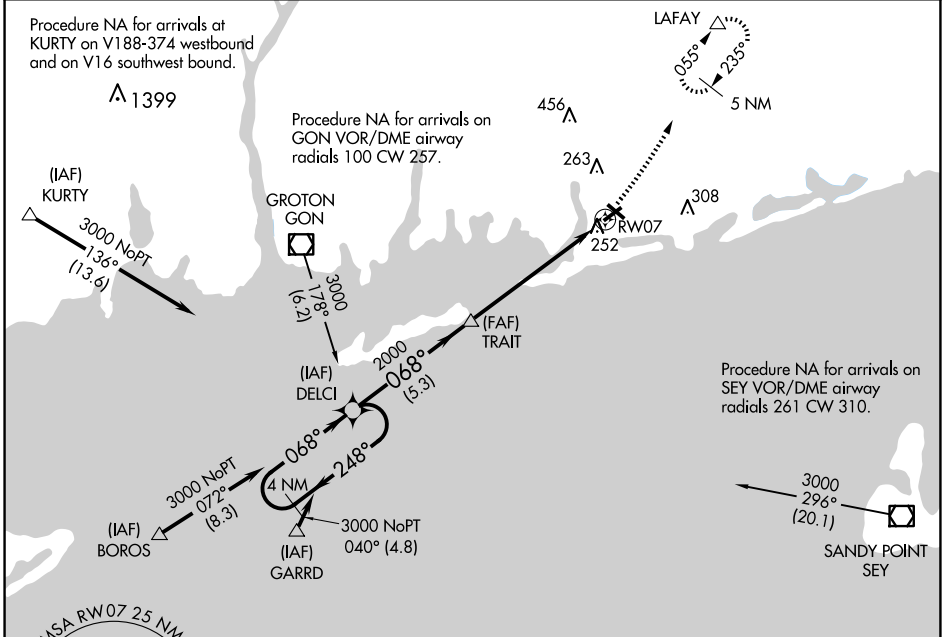
APP CRS <b>068°</b>	Rwy Idg <b>4010</b>
	TDZE <b>76</b>
	Apt Elev <b>81</b>

# RNAV (GPS) RWY 7

WESTERLY STATE (WST)

<b>▼</b> Inoperative table does not apply. DME/DME RNP-0.3 NA. <b>▲</b> NA	<b>MALSF</b> 	<b>MISSED APPROACH:</b> Climbing left turn to 2100 direct LAFAY and hold.
---	------------------	---

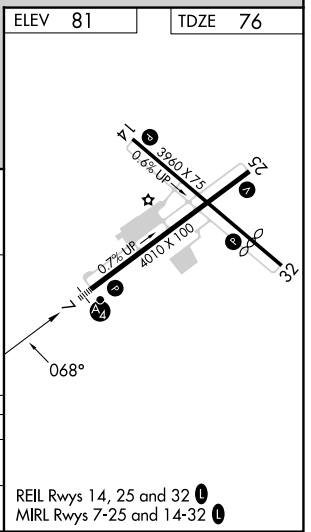
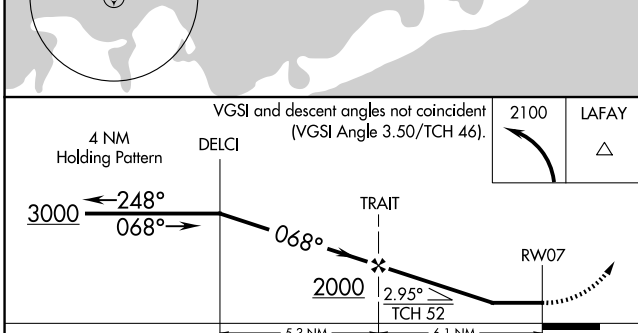
<b>ASOS</b> <b>132.375</b>	<b>PROVIDENCE APP CON *</b> <b>119.45 319.2</b>	<b>UNICOM</b> <b>123.0 (CTAF) 0</b>
-------------------------------	--	--



NE-1, 20 MAR 2025 to 17 APR 2025

NE-1, 20 MAR 2025 to 17 APR 2025

<b>ELEV 81</b>	<b>TDZE 76</b>
----------------	----------------



CATEGORY	A	B	C	D
LNVA MDA	520-1 444 (500-1)		520-1¼ 444 (500-1¼)	520-1½ 444 (500-1½)
CIRCLING	580-1 499 (500-1)		720-1¾ 639 (700-1¾)	760-2¼ 679 (700-2¼)

REIL Rwy 14, 25 and 32  
MRL Rwy 7-25 and 14-32