

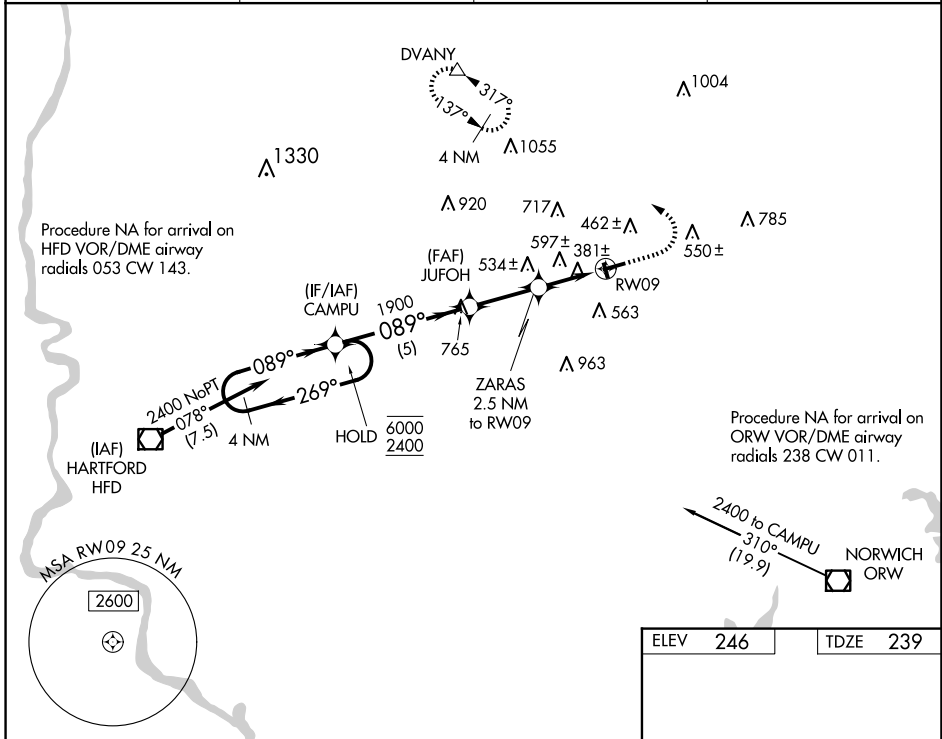
WAAS CH <b>58024</b> <b>W09A</b>	APP CRS <b>089°</b>	Rwy Idg TDZE Apt Elev	<b>4013</b> <b>239</b> <b>246</b>
--	------------------------	-----------------------------	---

# RNAV (GPS) RWY 9

WINDHAM (IJD)

RNP APCH - GPS.	MISSED APPROACH: Climb to 900 then climbing left turn to 2500 direct DVANY and hold, continue climb-in-hold to 2500.
▼ Procedure NA at night.	
▲ Rwy 9 helicopter visibility reduction below 1 SM NAV.	

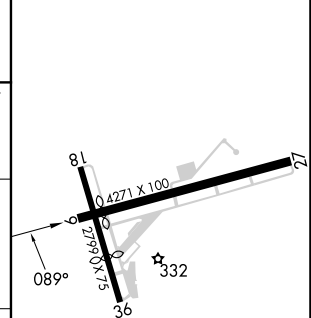
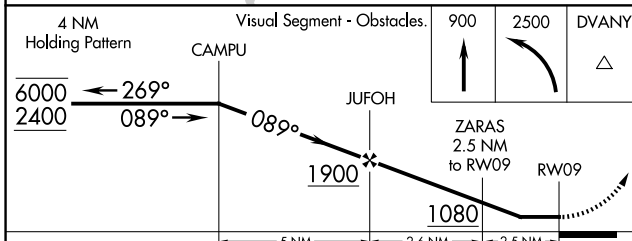
ASOS <b>133.675</b>	BRADLEY APP CON <b>127.8 269.325</b>	CLNC DEL <b>128.6</b>	UNICOM <b>122.975</b> (CTAF) <b>0</b>
------------------------	---	--------------------------	--



NE-1, 20 MAR 2025 to 17 APR 2025

NE-1, 20 MAR 2025 to 17 APR 2025

ELEV	246	TDZE	239
------	-----	------	-----



CATEGORY	A	B	C	D
LP MDA	640-1	401 (400-1)	640-1 1/8 401 (400-1 1/8)	NA
LNAV MDA	860-1	621 (700-1)	860-1 3/4 621 (700-1 3/4)	NA
CIRCLING	980-1	734 (800-1)	1120-2 1/2 874 (900-2 1/2)	NA

REIL Rwy 27 **0**  
MIRL Rwy 9-27 **0**