

LOC I-DRT <b>111.9</b> Chan <b>56</b>	APP CRS <b>132°</b>	Rwy Idg <b>6000</b> TDZE <b>1002</b> Apt Elev <b>1002</b>
---	------------------------	---

# ILS or LOC RWY 13

DEL RIO INTL (DRT)

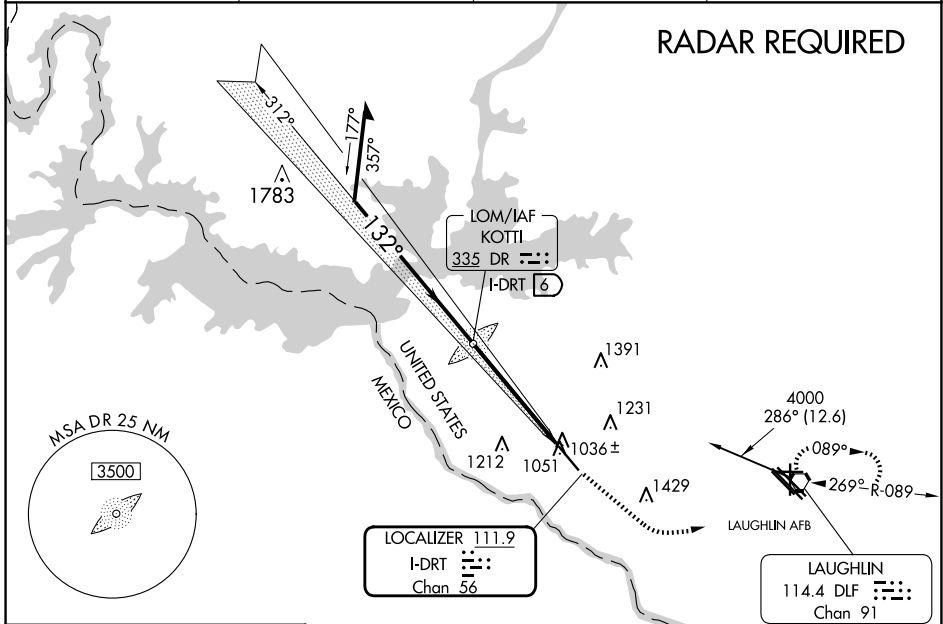
**NA** Circling NA for Cat D SW of Rwy 13-31. When local altimeter setting not received, use Laughlin AFB altimeter setting and increase all DAs 30 feet, all MDAs 40 feet, increase S-LOC 13 Cat D and Circling Cats C and D visibility ¼ SM. VDP NA when using Laughlin AFB altimeter setting.

MALS

MISSED APPROACH: Climb to 2000 via heading 122° then climbing left turn to 4000 direct DLF VORTAC and hold. Continue climb-in-hold to 4000.

ASOS <b>118.525</b>	DEL RIO APP CON ★ <b>119.6 259.1</b>	CLNC DEL <b>120.5</b>	UNICOM <b>122.8 (CTAF) 0</b>
------------------------	---	--------------------------	---------------------------------

**RADAR REQUIRED**



ELEV 1002	<b>D</b>	TDZE 1002
-----------	----------	-----------

**ADF or DME REQUIRED**

