

WAAS CH 97639	APP CRS 170°	Rwy Idg TDZE Apt Elev	4372 456 464
W17A			

RNAV (GPS) RWY 17

PENN VALLEY (SE/G)

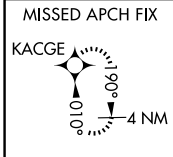
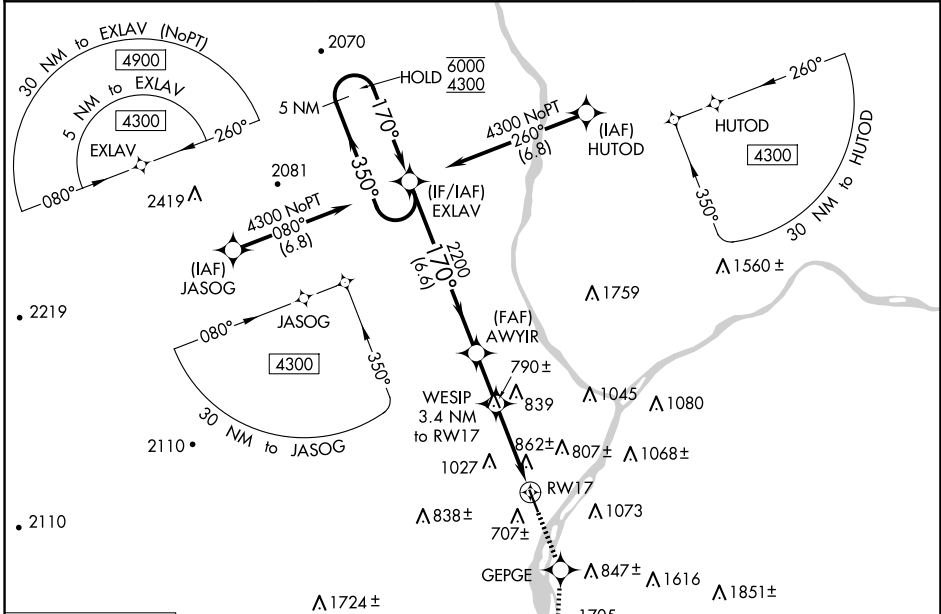
RNP APCH - GPS.

⚠ Rwy 17 helicopter visibility reduction below 1 SM NA. Straight-in Rwy 17 NA at night, Circling Rwy 17 NA at night.

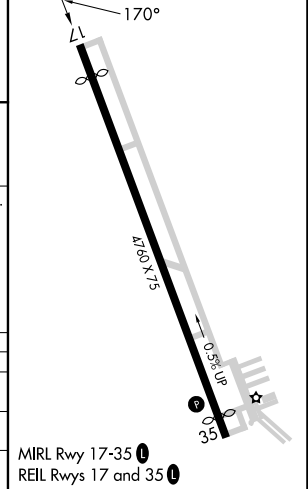
⚠ -15°C

MISSED APPROACH: Climb to 3900 direct GEPGE and on track 194° to KACGE and hold, continue climb-in-hold to 3900.

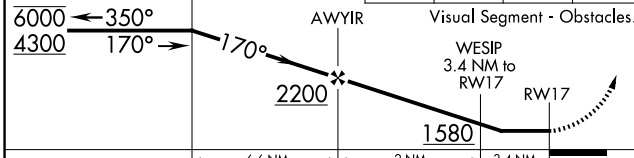
ASOS 123.975	HARRISBURG APP CON 118.25 269.45	UNICOM 122.7 (CTAF) 0
------------------------	--	---------------------------------



ELEV 464	TDZE 456
-----------------	-----------------



5 NM Holding Pattern	EXLAV	3900	GEPGE	tr 194°	KACGE
----------------------	-------	------	-------	---------	-------



CATEGORY	A	B	C	D
LP MDA	1200-1 744 (800-1)	1200-1¼ 744 (800-1¼)	1200-2	744 (800-2)
LNAV MDA	1260-1 804 (800-1)	1260-1¼ 804 (800-1¼)	1260-2½	804 (800-2½)
C CIRCLING	1400-1¼	936 (1000-1¼)	1420-3 956 (1000-3)	1600-3 1136 (1200-3)

MIRL Rwy 17-35 0
REIL Rws 17 and 35 0

NE-4, 20 MAR 2025 to 17 APR 2025

NE-4, 20 MAR 2025 to 17 APR 2025