

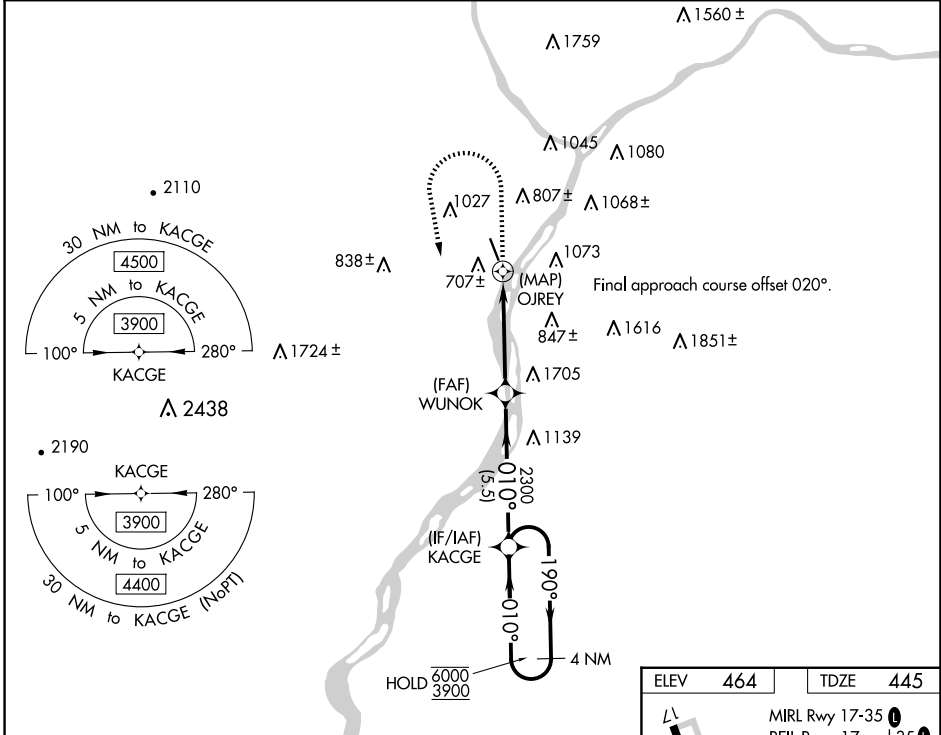
WAAS CH <b>49139</b> <b>W35A</b>	APP CRS <b>010°</b>	Rwy Idg TDZE Apt Elev	<b>4510</b> <b>445</b> <b>464</b>
--	------------------------	-----------------------------	---

# RNAV (GPS) RWY 35

PENN VALLEY (SE/G)

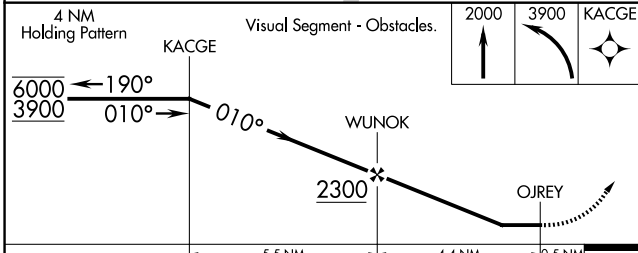
RNP APCH - GPS.		MISSED APPROACH: Climb to 2000 then climbing left turn to 3900 direct KACGE and hold.
<p>▼ Rwy 35 helicopter visibility reduction below 1 SM NA. Circling Rwy 17 NA at night.                  ▲ Straight-in Rwy 35 at night, operational VGSI required, remain on or above VGSI glidepath until threshold.                  ❄️ -15°C</p>		

ASOS <b>123.975</b>	HARRISBURG APP CON <b>118.25 269.45</b>	UNICOM <b>122.7 (CTAF) 0</b>
------------------------	--	---------------------------------

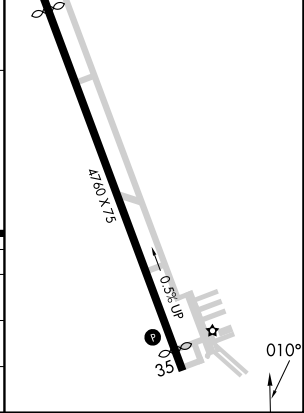


NE-4, 20 MAR 2025 to 17 APR 2025

NE-4, 20 MAR 2025 to 17 APR 2025



ELEV	<b>464</b>	TDZE	<b>445</b>
------	------------	------	------------



CATEGORY	A	B	C	D
LP MDA	1200-1 755 (800-1)	1200-1½ 755 (800-1½)	1200-2	755 (800-2)
LNAV MDA	1860-1½ 1415 (1400-1½)	1860-1½ 1415 (1400-1½)	1860-3	1415 (1400-3)
❏ CIRCLING	1860-1½ 1396 (1400-1½)	1860-1½ 1396 (1400-1½)	1860-3	1396 (1400-3)