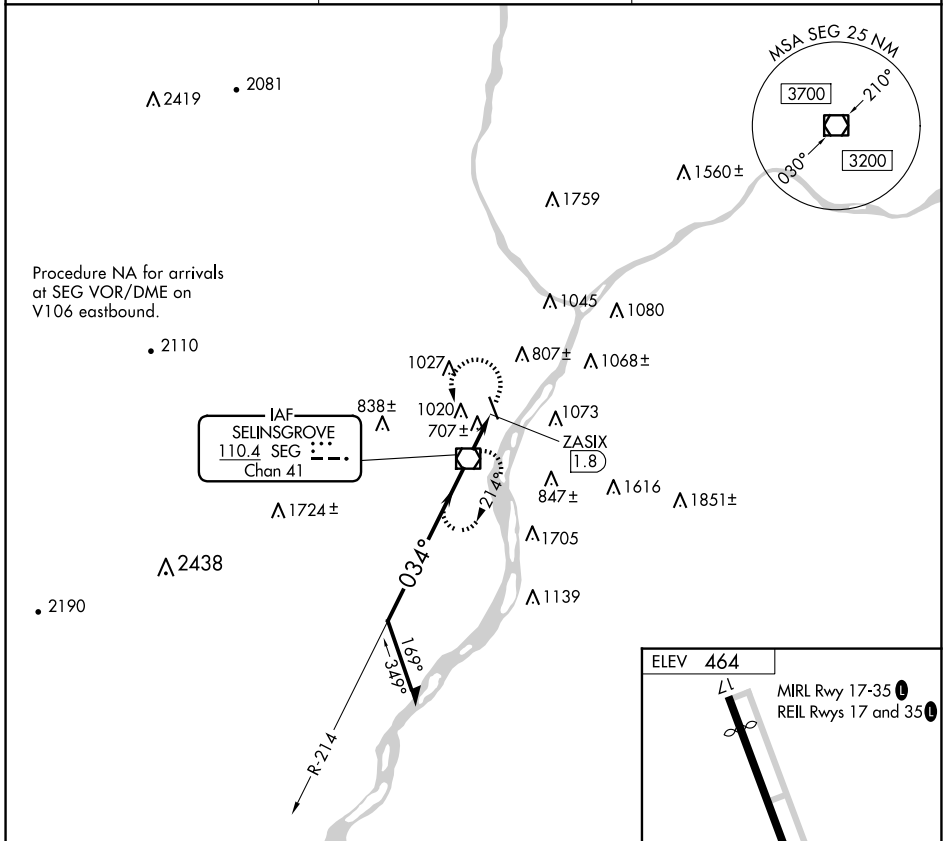


VOR/DME SEG <b>110.4</b> Chan <b>41</b>	APP CRS <b>034°</b>	Rwy Idg TDZE Apt Elev	<b>N/A</b> <b>N/A</b> <b>464</b>
---	------------------------	-----------------------------	--

**VOR-A**

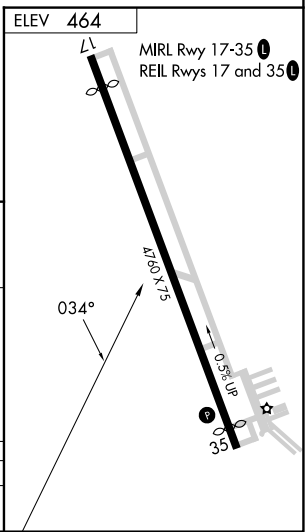
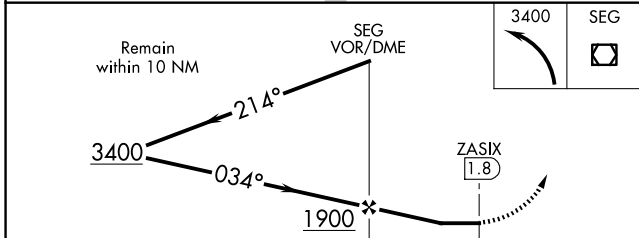
PENN VALLEY (SEG)

<p><b>▼</b> Circling to Rwy 17 NA at night. When Circling to Rwy 35 at night, operational VGSI required, remain on or above VGSI glidepath until threshold.</p> <p><b>⚠</b> -15°C</p>	<p>MISSED APPROACH: Climbing left turn to 3400 direct SEG VOR/DME and hold, continue climb-in-hold to 3400.</p>	
<p>ASOS <b>123.975</b></p>	<p>HARRISBURG APP CON <b>118.25 269.45</b></p>	<p>UNICOM <b>122.7 (CTAF) 0</b></p>



NE-4, 20 MAR 2025 to 17 APR 2025

NE-4, 20 MAR 2025 to 17 APR 2025



CATEGORY	A	B	C	D
<b>C</b> CIRCLING	1400-1¼	936 (1000-1¼)		NA