

LOC/DME I-PYM 109.35 Chan 30 (Y)	APP CRS 056°	Rwy ldg TDZE Apt Elev	4650 145 148
---	------------------------	-----------------------------	---

ILS or LOC RWY 6

PLYMOUTH MUNI (PYM)

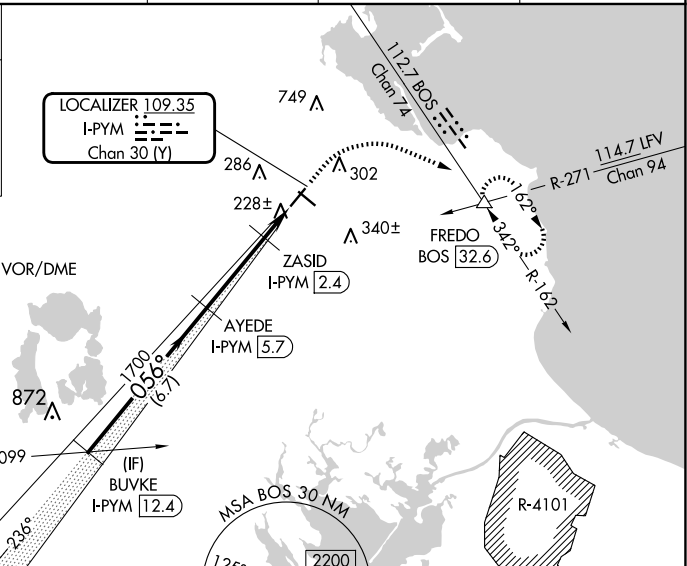
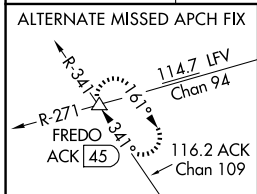
RNP APCH - GPS. From PVD VOR/DME.
DME required for LOC only.
Aircraft not GPS equipped - RADAR required for procedure entry.

⚠ Circling Rwy 15 NA at night.
⚠ Rwy 6 helicopter visibility reduction below 3/4 SM NA.
For inop ALS, increase S-ILS 6 visibility all Cats to 3/8 SM.

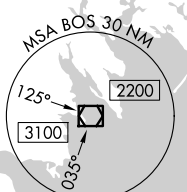
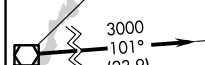
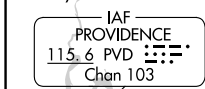
MALSF

⚠ MISSED APPROACH: Climb to 640 then climbing right turn to 2000 on heading 100° and on BOS VOR/DME R-162 to FREDO INT/BOS 32.6 DME and hold.

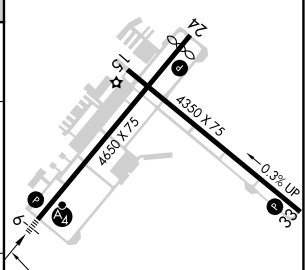
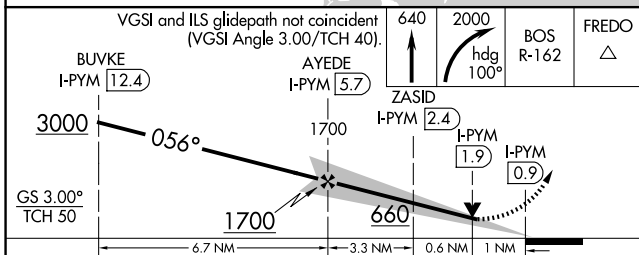
ASOS 135.625	BOSTON APP CON 118.2 284.6	CLNC DEL 127.75	UNICOM 122.725 (CTAF)	122.9 ⓪
------------------------	--------------------------------------	---------------------------	---------------------------------	-----------------------



Procedure NA for arrival on PVD VOR/DME
airway radials 093 CW 165.



ELEV 148	D	TDZE 145
----------	----------	----------



CATEGORY	A	B	C	D
S-ILS 6	436-3/4	291 (300-3/4)		NA
S-LOC 6	480-3/4	335 (400-3/4)		NA
C CIRCLING	620-1 472 (500-1)	640-1 492 (500-1)	760-1 3/4 612 (700-1 3/4)	NA

REIL Rwy 24 **⓪**
MIRL Rwy 6-24 and 15-33 **⓪**

NE-1, 20 MAR 2025 to 17 APR 2025

NE-1, 20 MAR 2025 to 17 APR 2025