

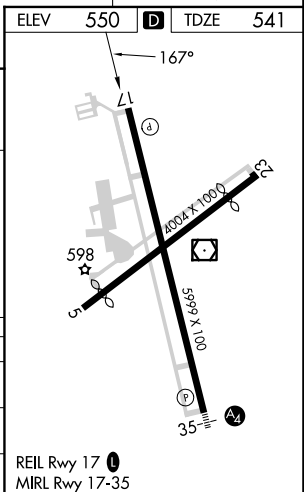
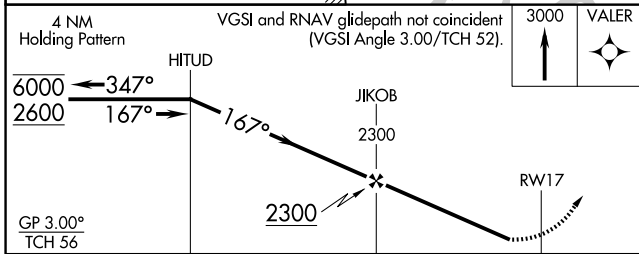
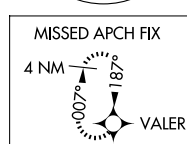
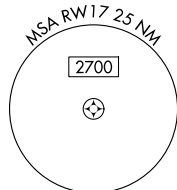
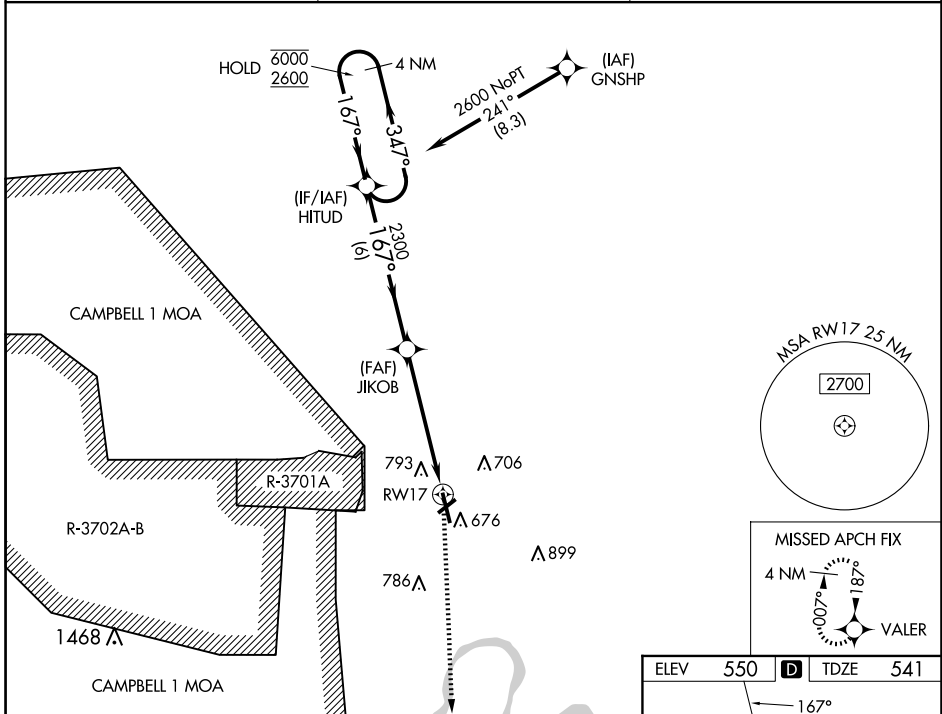
APP CRS	Rwy Idg	5999
167°	TDZE	541
	Apt Elev	550

RNAV (GPS) RWY 17

OUTLAW FLD (CKV)

RNP APCH - GPS.	<p>▼ Circling NA W of Rwy 17-35. For uncompensated Baro-VNAV systems, LNAV/VNAV NA below -13°C or above 54°C. Rwy 17 helicopter visibility reduction below 1 SM NA. Straight-in Rwy 17 NA at night, Circling Rwy 17, 23 NA at night.</p>	<p>MISSED APPROACH: Climb to 3000 direct VALER and hold.</p>
-----------------	---	---

ASOS 134.575	CAMPBELL APP CON 134.35 307.025	UNICOM 122.8 (CTAF) 0
------------------------	---	---------------------------------



CATEGORY	A	B	C	D
LNAV/VNAV DA	991-1 ³ / ₈ 450 (500-1 ³ / ₈)			
LNAV MDA	1060-1	519 (600-1)	1060-1 ³ / ₈	519 (600-1 ³ / ₈)
C CIRCLING	1060-1	510 (600-1)	1060-1 ¹ / ₂	1200-2 650 (700-2)

SE-1, 20 MAR 2025 to 17 APR 2025

SE-1, 20 MAR 2025 to 17 APR 2025