

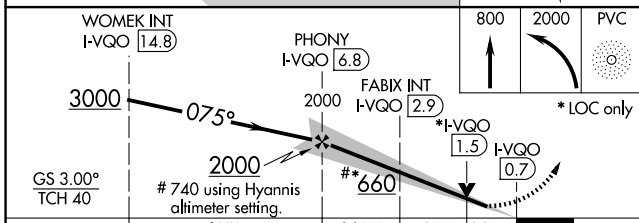
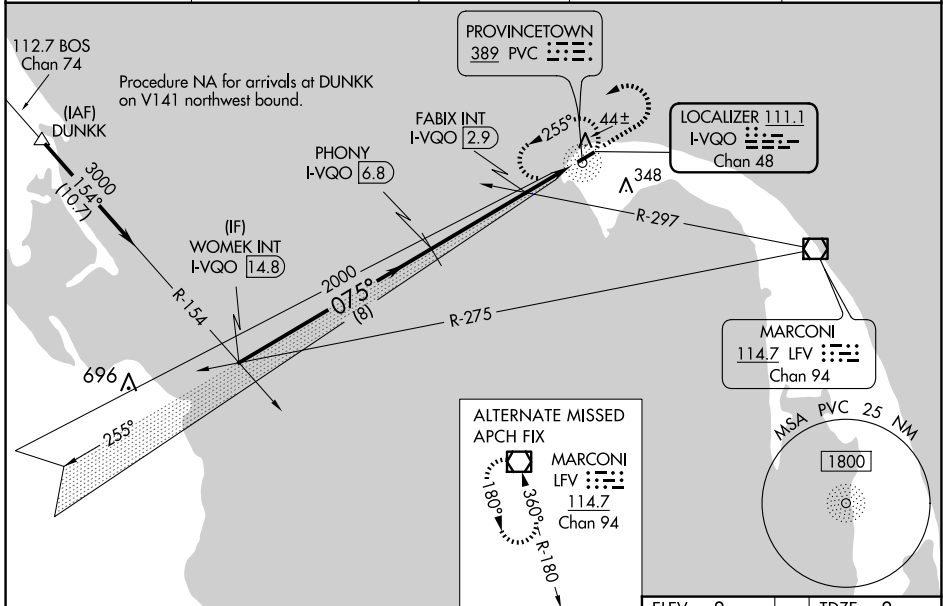
LOC/DME I-VQO <b>111.1</b> Chan 48	APP CRS <b>075°</b>	Rwy Idg <b>3502</b> TDZE <b>8</b> Apt Elev <b>8</b>
--	------------------------	---

# ILS or LOC RWY 7

PROVINCETOWN MUNI (PVC)

DME required for LOC only, ADF.		MALSF	MISSED APPROACH: Climb to 800 then climbing left turn to 2000 direct PVC NDB and hold, continue climb-in-hold to 2000.
<p>NA Inop table does not apply to S-ILS 7. When local altimeter setting not received, use Hyannis altimeter setting and increase all DA to 271 and all MDA 80 feet: increase S-LOC 7 and FABIX fix minimums S-LOC 7 all Cats visibility 1/4 SM. VDP NA when using Hyannis altimeter setting. For inop ALS when using Hyannis altimeter setting, increase S-ILS 7 all Cats visibility to 7/8 SM.</p>			

AWOS-3PT <b>119.275</b>	BOSTON APP CON <b>118.2</b>	CLNC DEL <b>120.65</b>	UNICOM <b>122.8</b> (CTAF)	<b>122.85</b>
----------------------------	--------------------------------	---------------------------	-------------------------------	---------------



CATEGORY	A	B	C	D
S-ILS 7	208-3/4	200 (200-3/4)		NA
S-LOC 7	660-3/4	652 (700-3/4)		NA
CIRCLING	660-1	652 (700-1)		NA
FABIX FIX MINIMUMS (DUAL VOR RECEIVERS OR DME REQUIRED)				
S-LOC 7	320-3/4	312 (400-3/4)		NA
CIRCLING	460-1	660-1		NA
	452 (500-1)	652 (700-1)		

ELEV 8	TDZE 8				
REIL Rwy 25	HIRL Rwy 7-25				
FAF to MAP 6.1 NM					
Knots	60	90	120	150	180
Min:Sec	6:06	4:04	3:03	2:26	2:02

NE-1, 20 MAR 2025 to 17 APR 2025

NE-1, 20 MAR 2025 to 17 APR 2025