

LOC I-UV D	APP CRS	Rwy ldg	5600
111.7	092°	TDZE	418
		Apt Elev	452

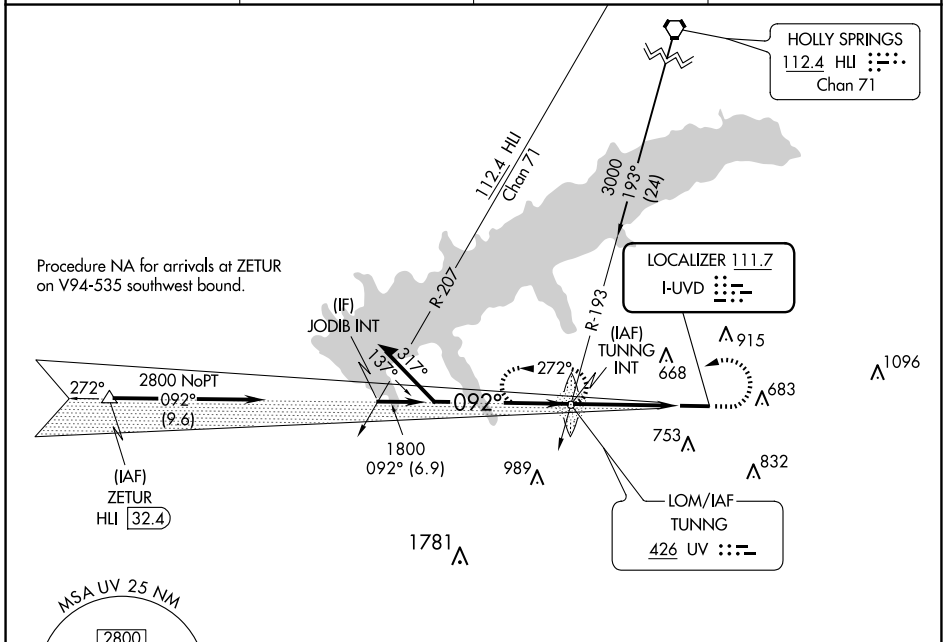
LOC Z RWY 9

UNIVERSITY-OXFORD (UOX)

NA ADF required. When local altimeter setting not received, use Olive Branch altimeter setting and increase all MDA 100 feet; increase S-LOC Cats C, D visibility 3/8 mile and Circling Cat C visibility 1/4 mile.

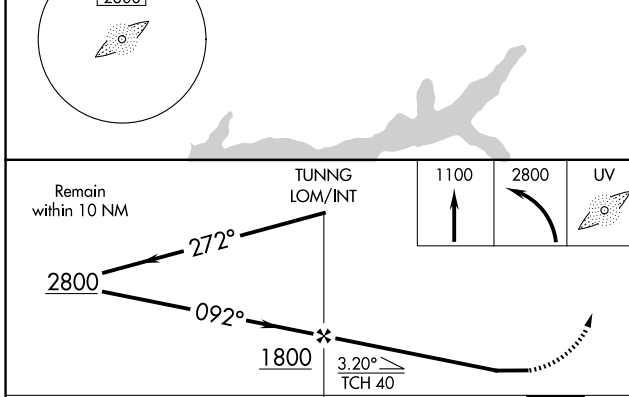
MISSED APPROACH: Climb to 1100 then climbing left turn to 2800 direct TUNNG LOM/INT and hold, continue climb-in-hold to 2800.

AWOS-3PT	MEMPHIS CENTER	GCO	UNICOM
132.725	128.5 279.55	135.075	123.0 (CTAF)



SC-4, 20 MAR 2025 to 17 APR 2025

SC-4, 20 MAR 2025 to 17 APR 2025



ELEV 452	TDZE 418
----------	----------

MIRL Rwy 9-27 **0**

REIL Rwys 9 and 27 **0**

FAF to MAP 4 NM

Knots	60	90	120	150	180
Min:Sec	4:00	2:40	2:00	1:36	1:20

CATEGORY	A	B	C	D
S-LOC 9	920-1	502 (500-1)	920-1 ³ / ₈	502 (500-1 ³ / ₈)
C CIRCLING	980-1 528 (600-1)	1060-1 608 (700-1)	1380-2 ³ / ₄ 928 (1000-2 ³ / ₄)	1380-3 928 (1000-3)