

WAAS CH <b>77800</b> <b>W09A</b>	APP CRS <b>092°</b>	Rwy Idg TDZE Apt Elev	<b>5600</b> <b>418</b> <b>452</b>
--	------------------------	-----------------------------	---

# RNAV (GPS) RWY 9

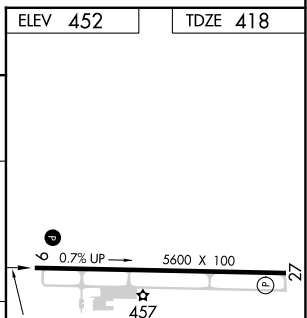
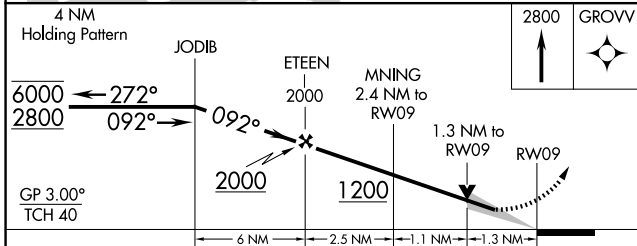
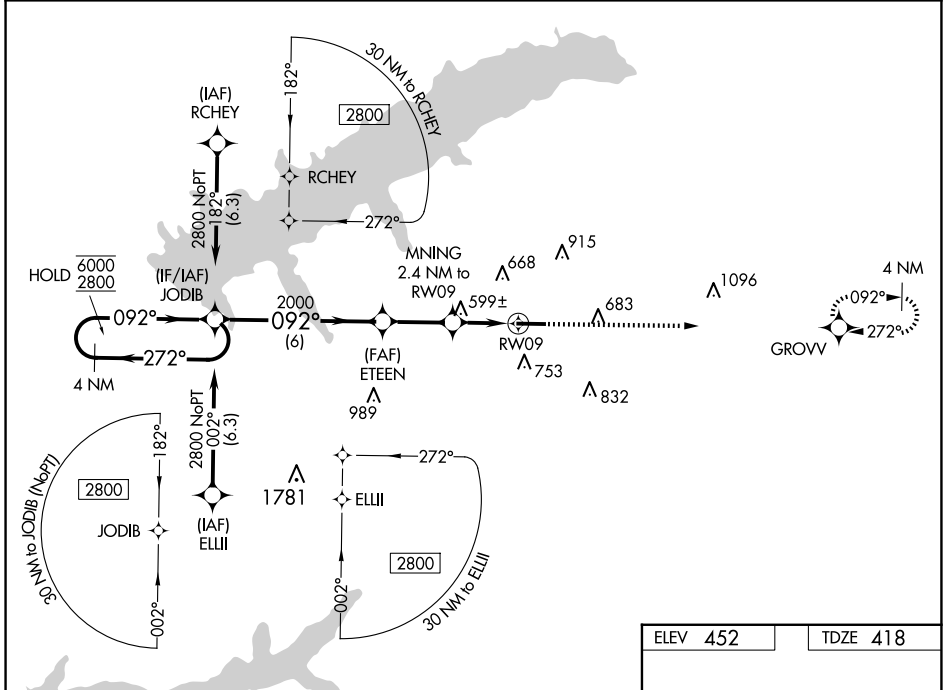
UNIVERSITY-OXFORD (UOX)

RNP APCH - GPS.

▼ For uncompensated Baro-VNAV systems, UNAV/VNAV NA below -15°C or above 54°C.

▲ MISSED APPROACH: Climb to 2800 direct GROVV and hold.

AWOS-3PT <b>132.725</b>	MEMPHIS CENTER <b>128.5 279.55</b>	GCO <b>135.075</b>	UNICOM <b>123.0 (CTAF) 0</b>
----------------------------	---------------------------------------	-----------------------	---------------------------------



CATEGORY	A	B	C	D
LPV DA	618- <sup>3</sup> / <sub>4</sub> 200 (200- <sup>3</sup> / <sub>4</sub> )			
LNNAV/VNAV DA	940- <sup>1</sup> / <sub>2</sub> 522 (500- <sup>1</sup> / <sub>2</sub> )	940-1 <sup>1</sup> / <sub>2</sub> 522 (500-1 <sup>1</sup> / <sub>2</sub> )		
LNNAV MDA	860-1	442 (500-1)	860-1 <sup>3</sup> / <sub>8</sub>	442 (500-1 <sup>3</sup> / <sub>8</sub> )
CIRCLING	980-1 528 (600-1)	1060-1 608 (700-1)	1380-2 <sup>3</sup> / <sub>4</sub> 928 (1000-2 <sup>3</sup> / <sub>4</sub> )	1380-3 928 (1000-3)

MIRL Rwy 9-27 0  
REIL Rwy 9 and 27 0

SC-4, 20 MAR 2025 to 17 APR 2025

SC-4, 20 MAR 2025 to 17 APR 2025