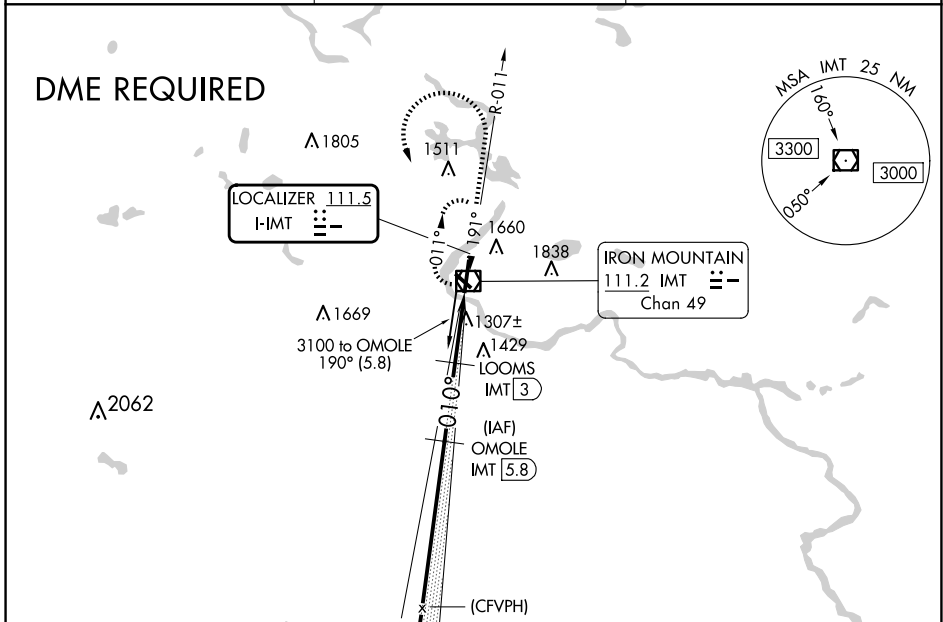


LOC I-IMT 111.5	APP CRS 010°	Rwy Idg 6502 TDZE 1133 Apt Elev 1182
---------------------------	------------------------	---

ILS or LOC RWY 1 FORD (IMT)

<p>NA Circling NA NE of Rws 19 and 31. DME required. DME from IMT VOR/DME. Simultaneous reception of I-IMT and IMT DME required. Circling Rwy 13, 19, 31 NA at night.</p>	<p>MALSR</p>	<p>MISSED APPROACH: Climb to 2200 then climbing left turn to 3100 direct IMT VOR/DME and hold.</p>
--	---------------------	---

ASOS 119.025	MINNEAPOLIS CENTER 121.25 322.5	UNICOM 122.8 (CTAF) 1
------------------------	---	---------------------------------

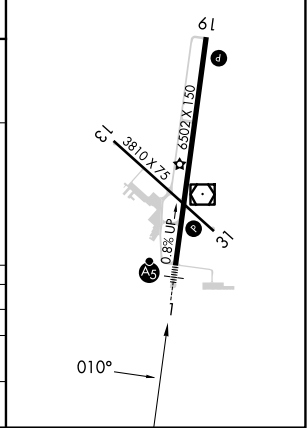
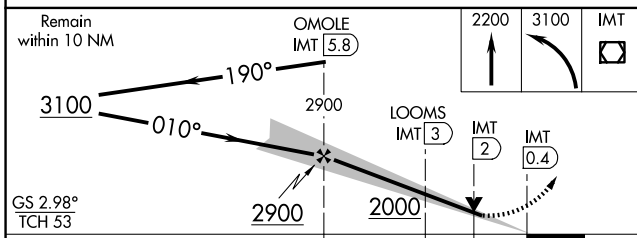


EC-1, 20 MAR 2025 to 17 APR 2025

EC-1, 20 MAR 2025 to 17 APR 2025

ELEV 1182	D	TDZE 1133
-----------	----------	-----------

MIRL Rwy 13-31 **1**
HIRL Rwy 1-19 **1**
REIL Rws 19 and 31 **1**



CATEGORY	A	B	C	D
S-ILS 1	1333-½		200 (200-½)	
S-LOC 1	1720-½	587 (600-½)	1720-1¼	587 (600-1¼)
C CIRCLING	1720-1 538 (600-1)	1780-1 598 (600-1)	1780-1¾ 598 (600-1¾)	1840-2 658 (700-2)