

VOR/DME IMT <b>111.2</b> Chan <b>49</b>	APP CRS <b>323°</b>	Rwy Idg <b>3810</b> TDZE <b>1131</b> Apt Elev <b>1182</b>
---	------------------------	---

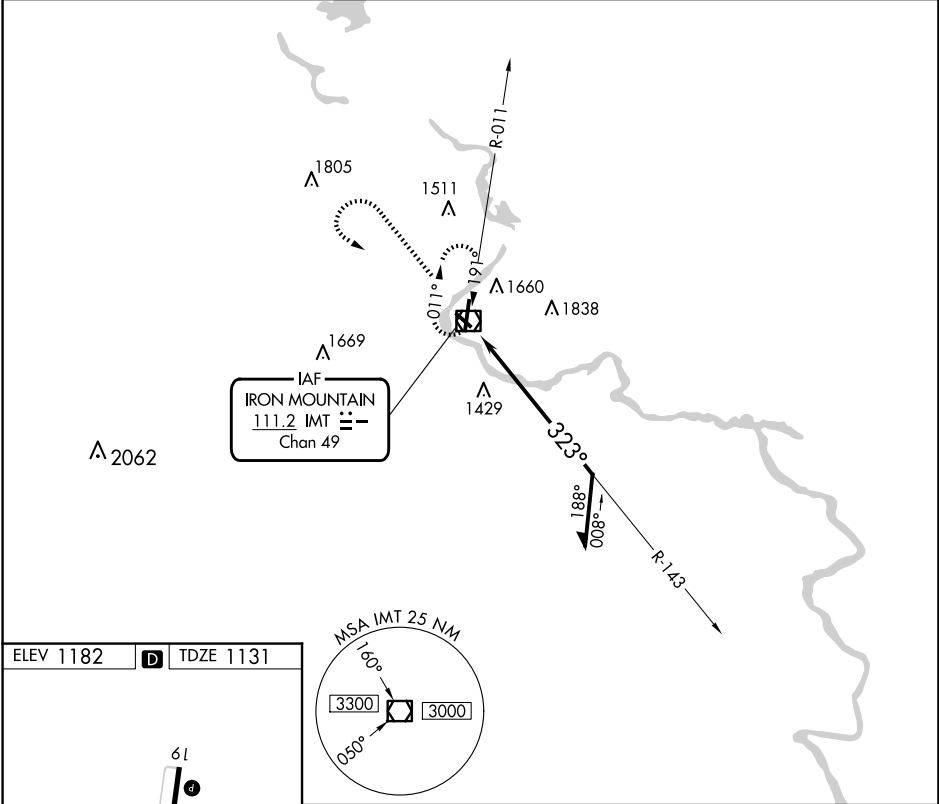
# VOR RWY 31

FORD (IMT)

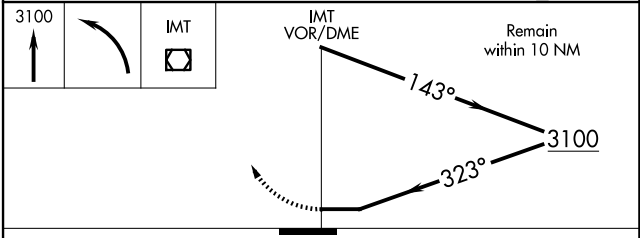
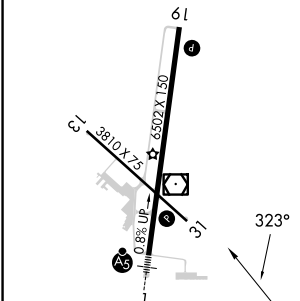
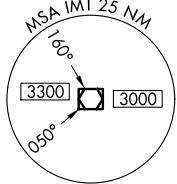
**▼** Circling NA northeast of Rwy 19 and 31. Rwy 31 helicopter visibility reduction below 1 SM NA.  
**▲** Straight-in Rwy 31 NA at night, Circling Rwy 13, 31 NA at night.

**MISSED APPROACH:** Climb to 3100 then left turn direct IMT VOR/DME and hold.

ASOS <b>119.025</b>	MINNEAPOLIS CENTER <b>121.25 322.5</b>	UNICOM <b>122.8</b> (CTAF) <b>1</b>
------------------------	---	--



ELEV 1182	<b>D</b>	TDZE 1131
-----------	----------	-----------



CATEGORY	A	B	C	D
S-31	1760-1	629 (600-1)	1760-1¾ 629 (600-1¾)	1760-2 629 (600-2)
<b>C</b> CIRCLING	1760-1 578 (600-1)	1780-1 598 (600-1)	1780-1¾ 598 (600-1¾)	1840-2 658 (700-2)

EC-1, 20 MAR 2025 to 17 APR 2025

EC-1, 20 MAR 2025 to 17 APR 2025