

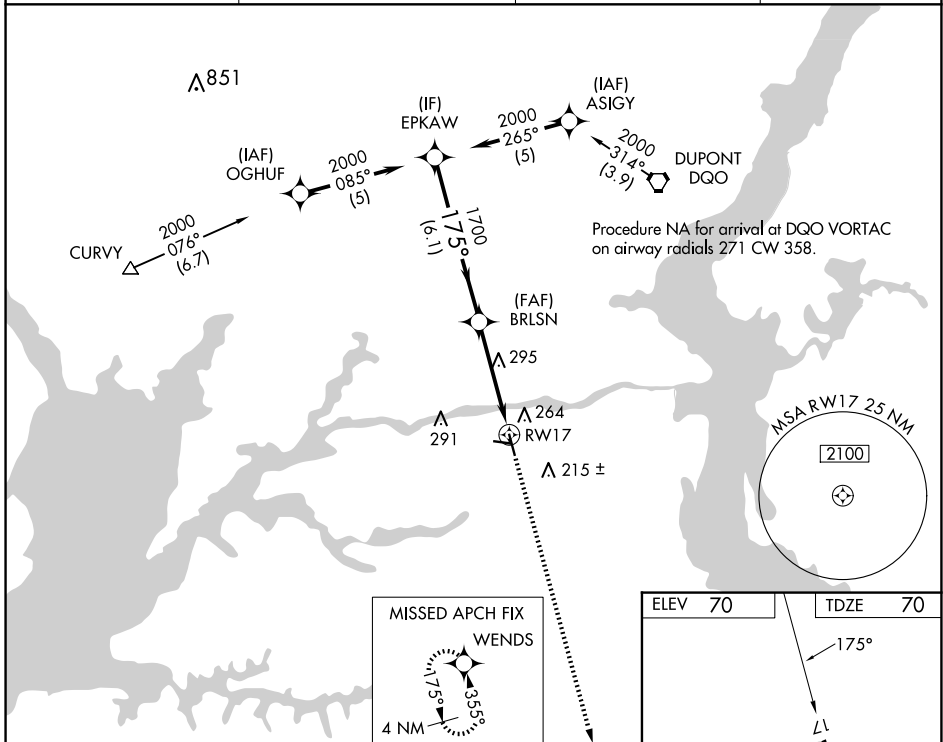
WAAS CH <b>49002</b> <b>W17A</b>	APP CRS <b>175°</b>	Rwy Idg TDZE Apt Elev	<b>4488</b> <b>70</b> <b>70</b>
--	------------------------	-----------------------------	---------------------------------------

# RNAV (GPS) RWY 17

SUMMIT (EVY)

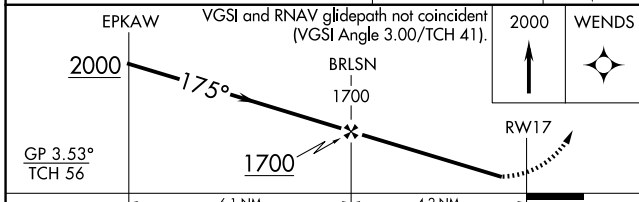
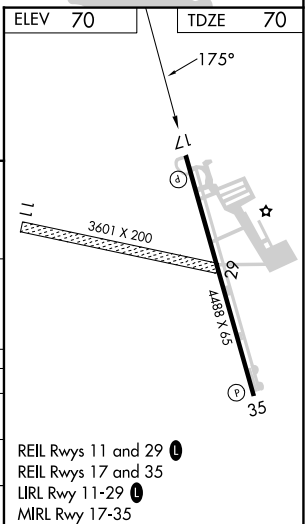
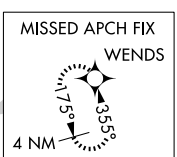
RNP APCH - GPS.		MISSED APPROACH: Climb to 2000 direct WENDS and hold.
<p>▼ Procedure NA at night. Rwy 17 helicopter visibility reduction below 1 SM NA.                  ▲ For uncompensated Baro-VNAV systems, LNAV/VNAV NA below -15°C or above 54°C.</p>		

AWOS-3 <b>132,325</b>	PHILADELPHIA APP CON <b>118,35 323.1</b>	UNICOM <b>122,725</b> (CTAF)	<b>123.5</b> (M)
--------------------------	---	---------------------------------	------------------



NE-3, 20 MAR 2025 to 17 APR 2025

NE-3, 20 MAR 2025 to 17 APR 2025



CATEGORY	A	B	C	D
LPV DA	541-1 <sup>3</sup> / <sub>8</sub>	471 (500-1 <sup>3</sup> / <sub>8</sub> )		NA
LNAV/VNAV DA	619-1 <sup>5</sup> / <sub>8</sub>	549 (600-1 <sup>5</sup> / <sub>8</sub> )		NA
LNAV MDA	560-1	490 (500-1)	560-1 <sup>3</sup> / <sub>8</sub> 490 (500-1 <sup>3</sup> / <sub>8</sub> )	NA

REIL Rwy 11 and 29 (M)  
 REIL Rwy 17 and 35 (M)  
 LIRL Rwy 11-29 (M)  
 MRL Rwy 17-35 (M)