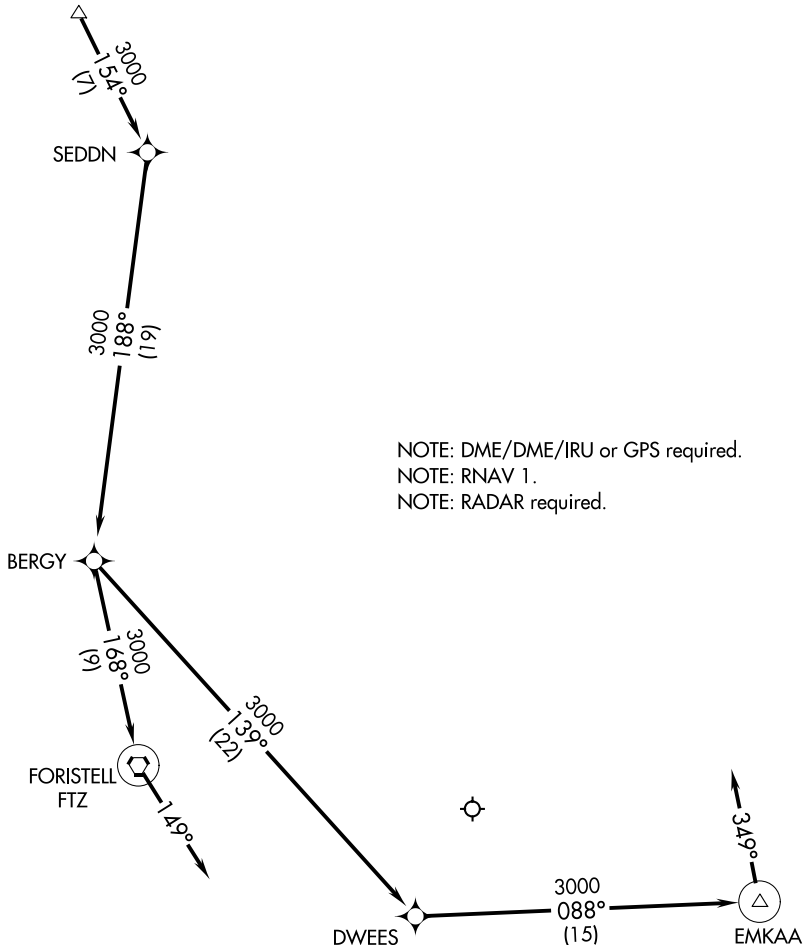


DIRT  
VERTICAL NAVIGATION  
PLANNING INFORMATION

ST. LOUIS APP CON  
119.15 335.5  
ATIS  
134.8

Expect 13000



NOTE: DME/DME/IRU or GPS required.  
NOTE: RNAV 1.  
NOTE: RADAR required.

NOTE: Chart not to scale.

ARRIVAL ROUTE DESCRIPTION

From DIRT on track 154° to SEDDN, then on track 188° to BERGY.

LANDING RUNWAYS 8L/R: From BERGY on track 168° to FTZ VORTAC, then on track 149°. Expect RADAR vectors to final approach prior to FTZ VORTAC.

LANDING RUNWAYS 26L/R: From BERGY on track 139° to DWEES, then on track 088° to EMKAA, then on track 349°. Expect RADAR vectors to final approach prior to EMKAA.