

WAAS CH 58204 W17A	APP CRS 168°	Rwy Idg 6501 TDZE 17 Apt Elev 17
----------------------------------------	------------------------	-------------------------------------------------------------

RNAV (GPS) RWY 17

TRENT LOTT INTL (PQL)

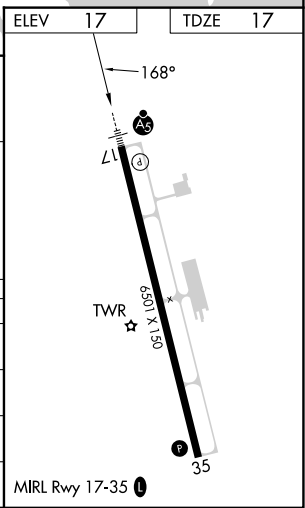
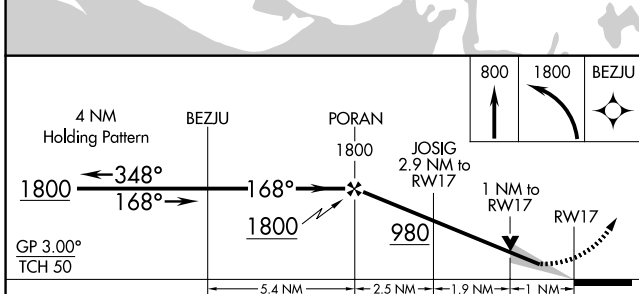
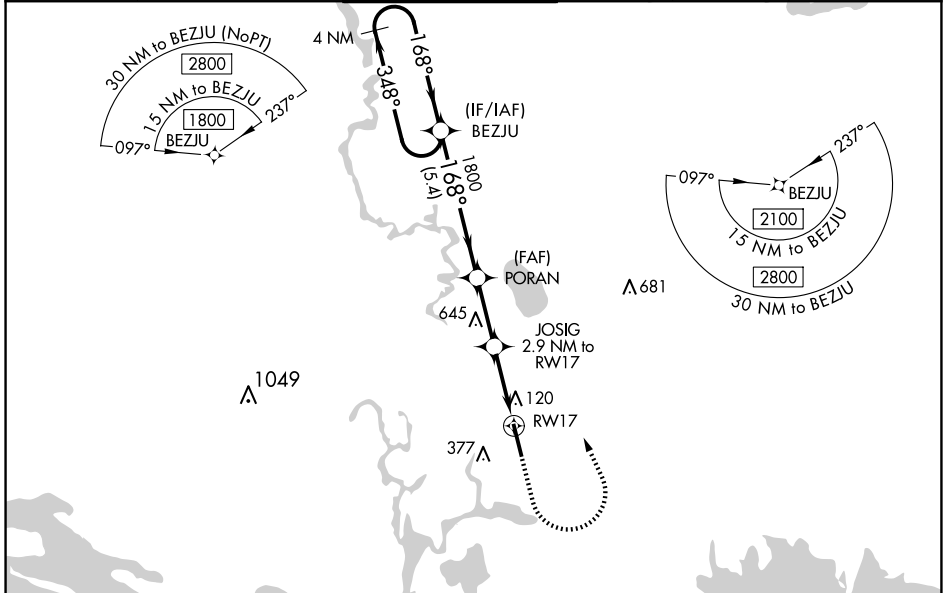
RNP APCH - GPS.

⚠ For uncompensated Baro-VNAV systems, LNAV/VNAV NA below -5°C or above 54°C.
⚠ When local altimeter setting not received, use Mobile Rgnl altimeter setting; increase LPV DA to 292 feet and LNAV/VNAV DA to 357 feet; increase LNAV/VNAV all visibilities 1/8 SM. Increase all MDA 80 feet and LNAV Cat C/D visibility 1/4 SM and Circling Cat C/D visibility 1/2 SM. Baro-VNAV and VDP NA with Mobile Rgnl altimeter setting. For inop ALS when using Mobile Rgnl altimeter setting increase LPV all Cats visibility to 1/8 SM.



MISSED APPROACH:
 Climb to 800 then climbing left turn to 1800 direct BEZJU and hold.

ATIS 135.175	MOBILE APP CON ★ 121.0 307.1	TRENT LOTT TOWER ★ 118.575 (CTAF) 0	GND CON 121.725	CLNC DEL 121.725	UNICOM 122.8
------------------------	----------------------------------------	-----------------------------------------------	---------------------------	----------------------------	------------------------



CATEGORY	A	B	C	D
LPV DA	217-1/2		200 (200-1/2)	
LNAV/VNAV DA	282-1/2		265 (300-1/2)	
LNAV MDA	380-1/2	363 (400-1/2)	380-5/8	363 (400-5/8)
CIRCLING	480-1	680-1	680-1 3/4	680-2
	463 (500-1)	663 (700-1)	663 (700-1 3/4)	663 (700-2)

SC-4, 20 MAR 2025 to 17 APR 2025

SC-4, 20 MAR 2025 to 17 APR 2025