

| | | |
|---|------------------------|---|
| LOC/DME I-SIT 108.9 Chan 26 | APP CRS 116° | Rwy Idg 6500 TDZE 24 Apt Elev 27 |
|---|------------------------|---|

LDA RWY 11

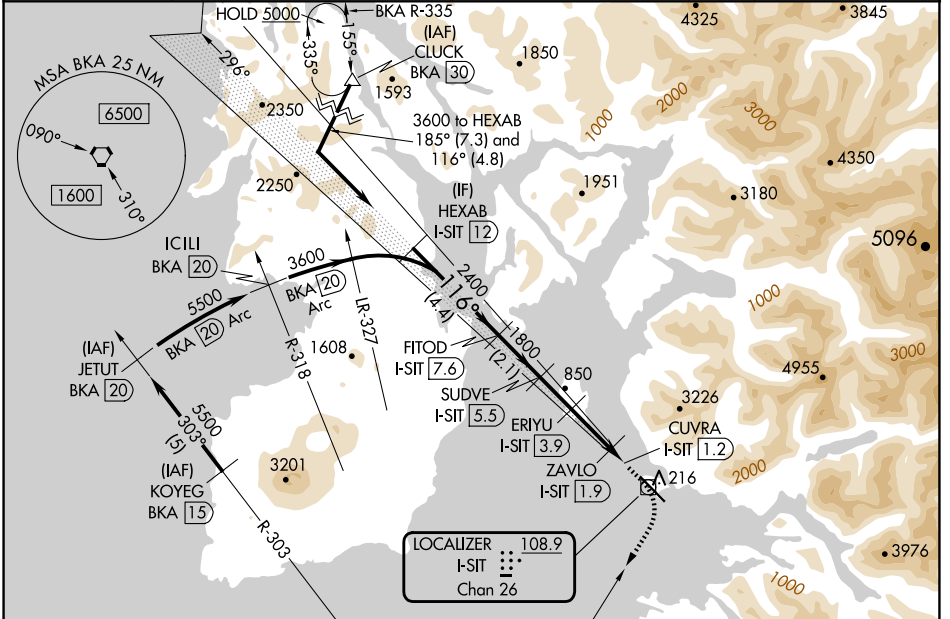
SITKA ROCKY GUTIERREZ (SIT)(PASI)

DME required.

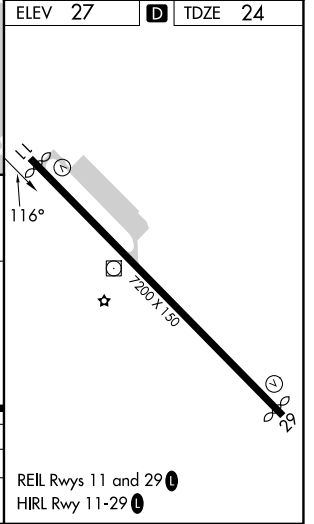
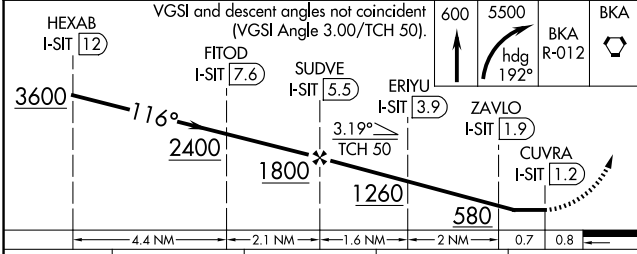
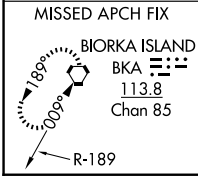
▼ When local altimeter setting not received, procedure NA.
▲ Circling NA northeast of Rwy 11-29.

MISSED APPROACH: Climb to 600 then climbing right turn to 5500 on heading 192° and BKA VORTAC R-012 to BKA VORTAC and hold, continue climb-in-hold to 5500.

| | | | |
|----------------------|--|--|-------------------------|
| AFIS 135.9 | ANCHORAGE CENTER 126.1 335.5 | SITKA RADIO 123.6 (CTAF) 0 122.2 | UNICOM 122.95 |
|----------------------|--|--|-------------------------|



Procedure NA for arrival on BKA VORTAC airway radial 347.



| CATEGORY | A | B | C | D |
|-------------------|-------------------|---|---------------------------|----------------------|
| S-11 | 520-1 496 (500-1) | | 520-1 3/8 496 (500-1 3/8) | |
| C CIRCLING | 520-1 493 (500-1) | | 540-1 1/2 513 (600-1 1/2) | 1500-3 1473 (1500-3) |

AK, 20 FEB 2025 to 17 APR 2025

AK, 20 FEB 2025 to 17 APR 2025