

| | | |
|-------------|----------|-------------|
| APP CRS | Rwy Idg | 4899 |
| 083° | TDZE | 634 |
| | Apt Elev | 634 |

RNAV (GPS) RWY 8

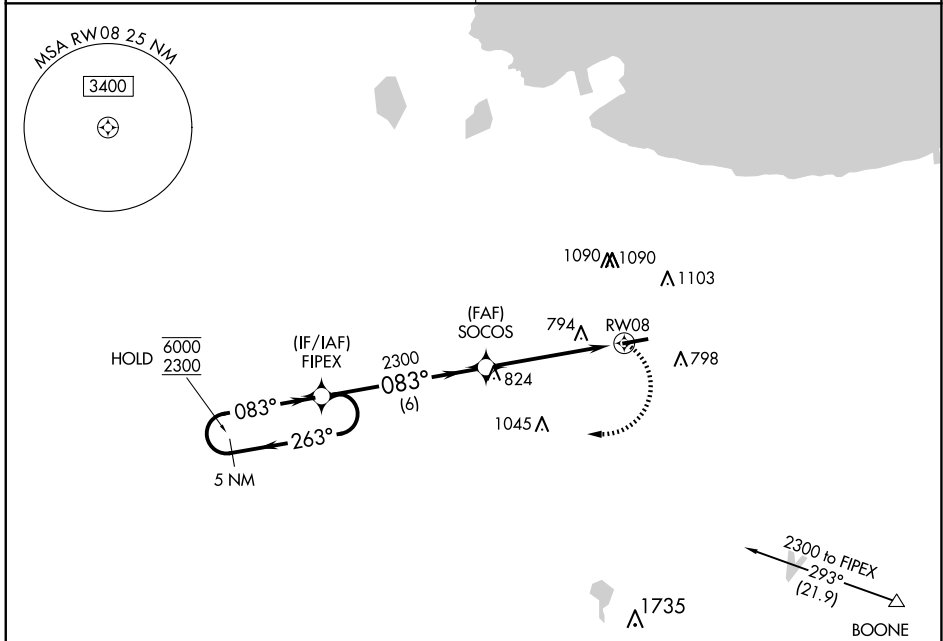
GRIFFITH-MERRILLVILLE (Ø5C)

RNP APCH - GPS

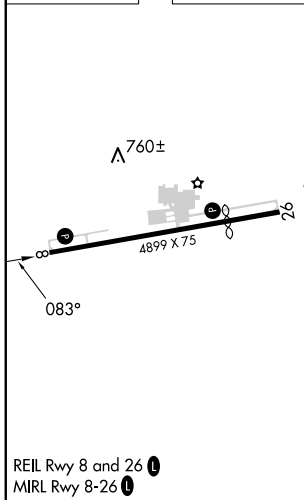
Procedure NA at night. Obtain local altimeter setting on CTAF; when not received, use Chicago Midway Intl altimeter setting and increase all MDAs 60 feet. Rwy 8 helicopter visibility reduction below 1 SM NA.

MISSED APPROACH: Climbing right turn to 2300 direct FIPEX and hold.

| | |
|---------------------------------------|---------------------------------|
| CHICAGO APP CON 133.1 285.6 | UNICOM 123.0 (CTAF) 0 |
|---------------------------------------|---------------------------------|



| | |
|----------|----------|
| ELEV 634 | TDZE 634 |
|----------|----------|



| | | | | |
|--|--|------------------|-----------------|--------|
| 5 NM Holding Pattern | VGSi and descent angles not coincident (VGSi Angle 3.50/TCH 44). | | 2300 | FIPEX |
| | 6000 2300 | ← 263° → 083° | 2300 | SOCOS |
| | | | 3.04° TCH 41 | RWY 08 |
| | | 6 NM | 5 NM | |
| CATEGORY | A | B | C | D |
| LNAY MDA | 1080-1 | 446 (500-1) | NA | |
| <input checked="" type="checkbox"/> CIRCLING | 1200-1 | 566 (600-1) | NA | |