

VORTAC HYS 110.4 Chan 41	APP CRS 170°	Rwy Idg TDZE Apt Elev	6501 1999 1999
--	------------------------	-----------------------------	---

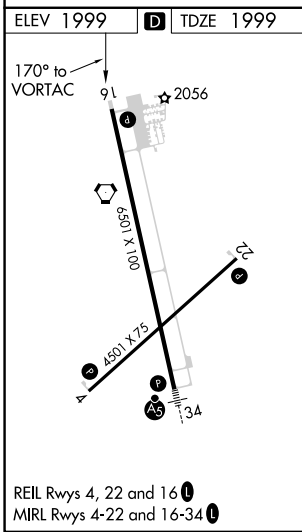
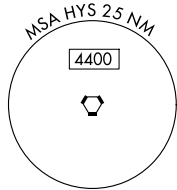
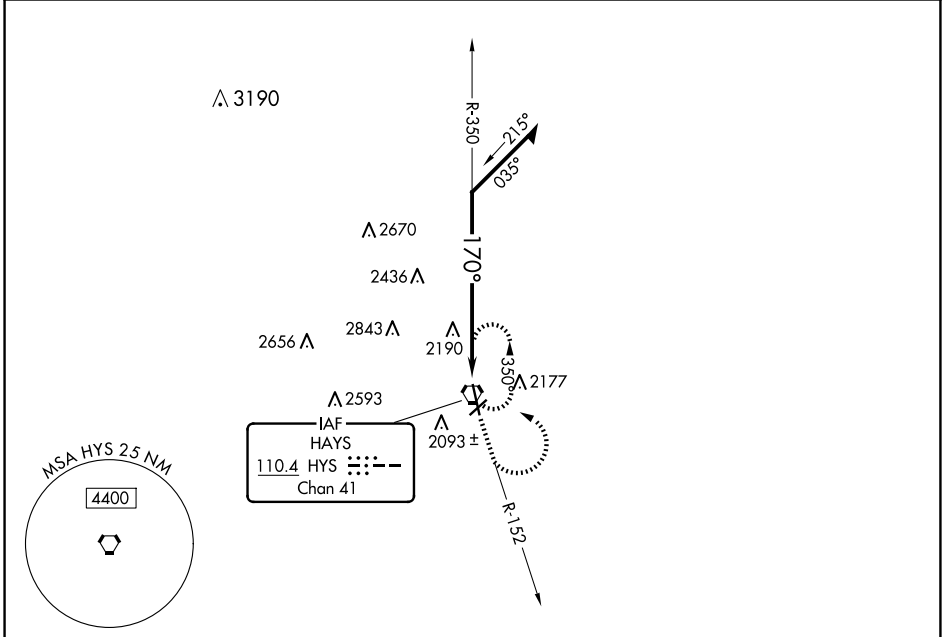
VOR RWY 16

HAYS RGNL (HYS)

⚠ When local altimeter setting not received, use Russell altimeter setting and increase all MDA 80 feet, increase S-16 and Circling Cats B, C and D visibility ¼ mile. Visibility reduction by helicopters NA. Circling NA for Cat D northwest of Rwy 4 and west of Rwy 16.

MISSED APPROACH: Climb to 3800 via HYS R-152 then climbing left turn to 3900 direct HYS VORTAC and hold.

AWOS-3PT 125.525	KANSAS CITY CENTER 124.4 322.4	UNICOM 122.8 (CTAF) 0
----------------------------	--	---------------------------------



ELEV 1999	D	TDZE 1999
-----------	----------	-----------

Remain within 10 NM

3800 ↑ HYS R-152	3900 ↶ HYS	HYS ⬡
------------------------	------------------	----------

CATEGORY	A	B	C	D
S-16	2700-1	701 (800-1)	2700-2 701 (800-2)	2700-2¼ 701 (800-2¼)
CIRCLING	2700-1	701 (800-1)	2700-2 701 (800-2)	2700-2¼ 701 (800-2¼)

NC-2, 20 MAR 2025 to 17 APR 2025

NC-2, 20 MAR 2025 to 17 APR 2025