

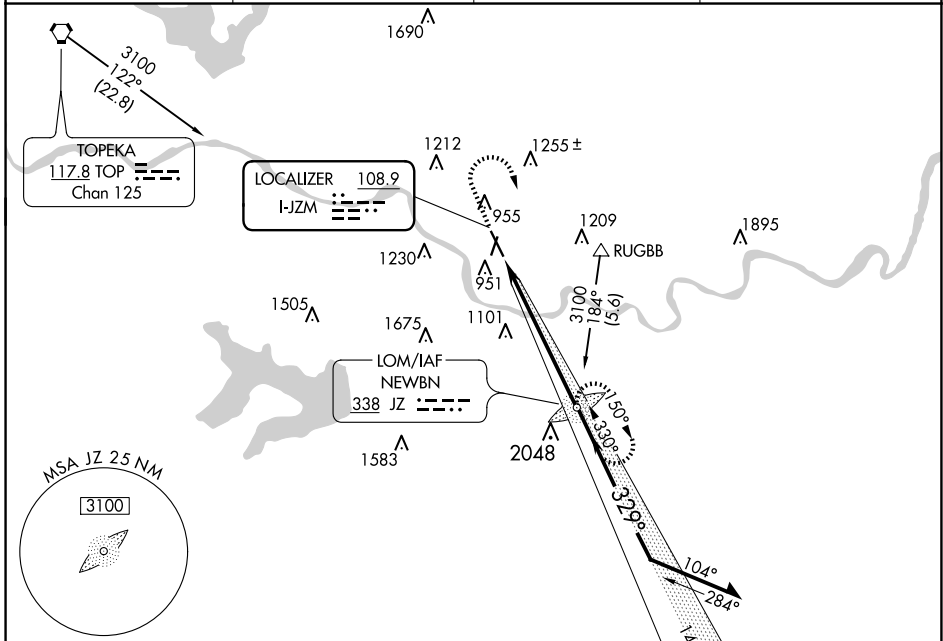
LOC I-JZM 108.9	APP CRS 329°	Rwy Idg 5700 TDZE 831 Apt Elev 833
---------------------------	------------------------	---

ILS or LOC RWY 33

LAWRENCE RGNL (LWC)

<p>▼ When local altimeter setting not received, use Philip Billard Muni altimeter setting and increase DA to 1083 feet; increase all MDAs 60 feet and visibility Cat C ¼ SM.</p>	<p>MALSR</p>	<p>MISSED APPROACH: Climb to 2000 then climbing right turn to 3100 direct NEWBN LOM and hold.</p>
---	---------------------	--

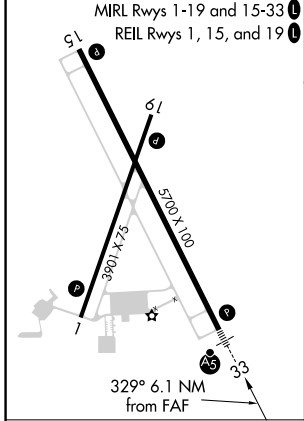
ASOS 121.225	KANSAS CITY CENTER 123.8 343.7	CLNC DEL 121.825	UNICOM 123.0 (CTAF) 0
------------------------	--	----------------------------	---------------------------------



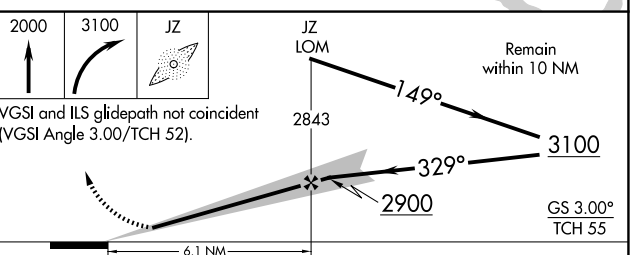
NC-2, 20 MAR 2025 to 17 APR 2025

NC-2, 20 MAR 2025 to 17 APR 2025

ELEV 833	TDZE 831
----------	----------



ADF REQUIRED



CATEGORY	A	B	C	D
S-ILS 33	1031-½ 200 (200-½)			NA
S-LOC 33	1260-½ 429 (500-½)		1260-¾ 429 (500-¾)	NA
CIRCLING	1420-1 587 (600-1)	1480-1 647 (700-1)	1620-2¼ 787 (800-2¼)	NA

FAF to MAP 6.1 NM					
Knots	60	90	120	150	180
Min:Sec	6:06	4:04	3:03	2:26	2:02