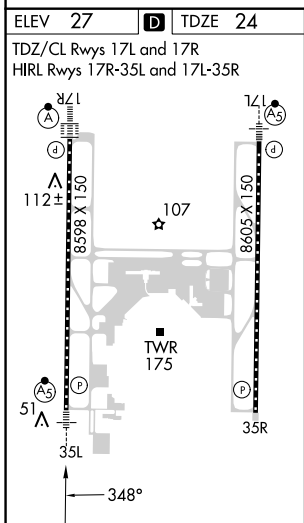
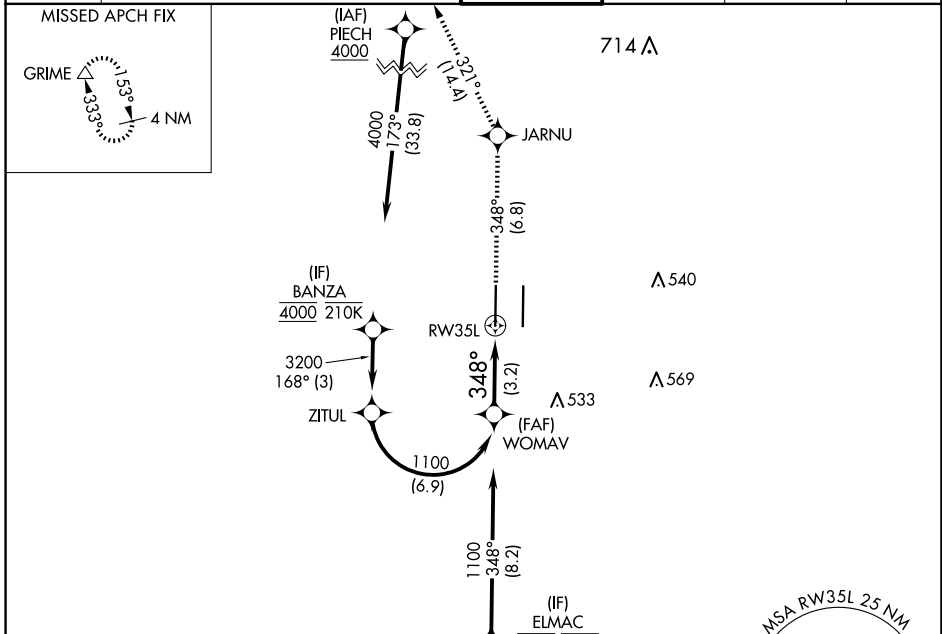


APP CRS	Rwy Idg	8598
348°	TDZE	24
	Apt Elev	27

RNAV (RNP) Z RWY 35L

SACRAMENTO INTL (SMF)

RNP AR APCH-GPS.		MALSR	MISSED APPROACH: Climb to 2000 on track 348° to JARNU and track 321° to GRIME and hold.		
▼ For uncompensated Baro-VNAV systems, procedure NA below -2°C or above 54°C. For inop ALS, increase RNP 0.12 all Cats visibility to RVR 4500; increase RNP 0.30 all Cats visibility to RVR 5500.					
D-ATIS	NORCAL APP CON	CAPITOL TOWER	GND CON	CLNC DEL	CPDLC
126.75	125.4 259.1 (W-NE) 125.25 257.9 (SW) 127.4 317.5 (E-SE)	125.7 256.7	121.7 256.7	121.1 256.7	



VGSJ and RNAV glidepath not coincident (VGSJ Angle 3.00/TCH 76).		2000	JARNU	GRIME
WOMAV		↑		tr 321°
1100		tr 348°		
See planview for multiple IF locations.				
1100		RW35L		
GP 3.00°		3.2 NM		
TCH 59				
CATEGORY	A	B	C	D
RNP 0.12 DA	318/24		294 (300-1/2)	
RNP 0.30 DA	382/30		358 (400-5/8)	
AUTHORIZATION REQUIRED				

SW-2, 20 MAR 2025 to 17 APR 2025

SW-2, 20 MAR 2025 to 17 APR 2025