
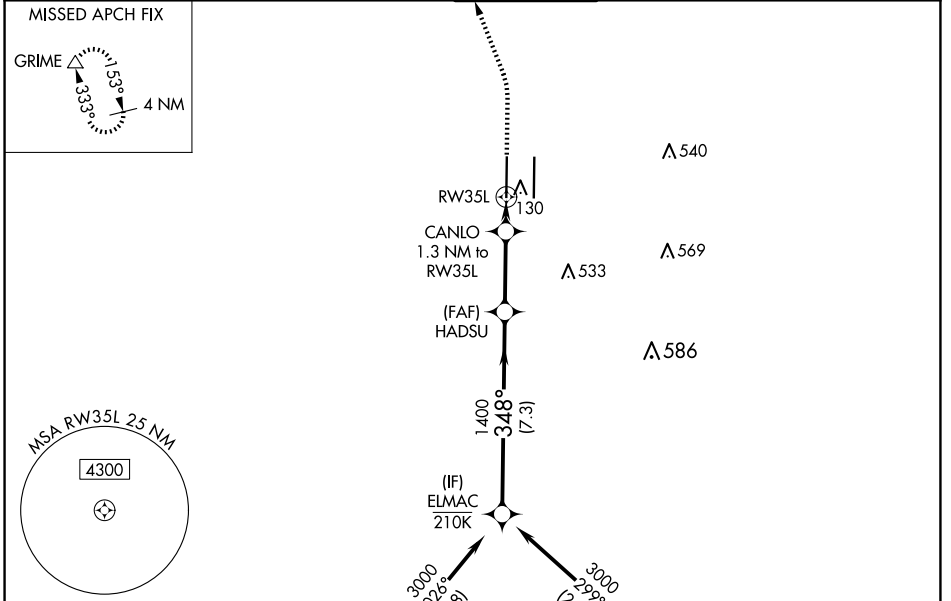


WAAS CH 86602 W35A	APP CRS 348°	Rwy Idg TDZE Apt Elev	8598 24 27
--	------------------------	-----------------------------	---------------------------------------

RNAV (GPS) Y RWY 35L

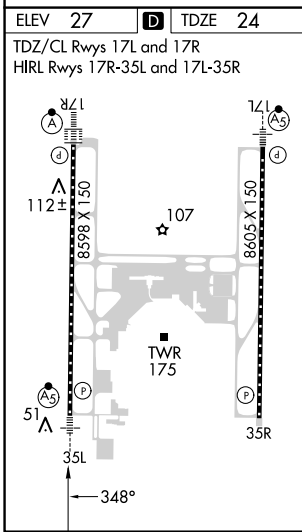
SACRAMENTO INTL (SMF)

RNP APCH-GPS.		CAPITOL TOWER 125.7 256.7		GND CON 121.7 256.7		CLNC DEL 121.1 256.7		CPDLC
▼ Circling NA east of Rwy 17R-35L. For uncompensated Baro-VNAV systems, LNAV/VNAV NA below -2°C or above 54°C. For inop ALS, increase LNAV/VNAV all Cats visibility to RVR 4500 and increase LNAV Cat C/D visibility to RVR 5500. *RVR 1800 authorized with use of FD or AP or HUD to DA.				MALSR 		MISSED APPROACH: Climb to 800 then climbing left turn to 2000 direct GRIME and hold.		



SW-2, 20 MAR 2025 to 17 APR 2025

SW-2, 20 MAR 2025 to 17 APR 2025



ELMAC		HADSU		CANLO		RWY 35L	
3000		1400		480		800	
GP 3.00°		348°		1400		GRIME	
TCH 59		7.3 NM		2.9 NM		1.3 NM	
CATEGORY	A	B	C	D			
LPV DA*	224/24		200 (200-½)				
LNAV/VNAV DA	311/24		287 (300-½)				
LNAV MDA	380/24 356 (400-½)		380/30 356 (400-¾)				
C CIRCLING	440-1 413 (500-1)		480-1 453 (500-1)		480-1½ 453 (500-1½)		580-2 553 (600-2)