

(SUUTR.SUUTR4) 22195

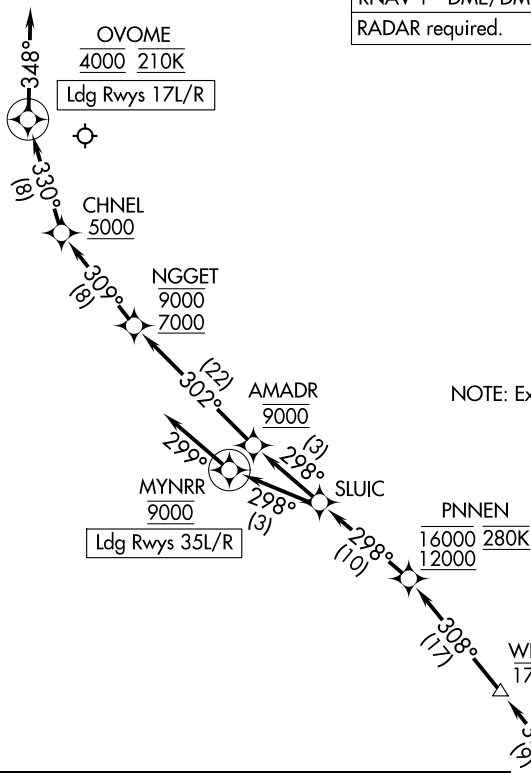
# SUUTR FOUR ARRIVAL (RNAV)

AL-5490 (FAA)

SACRAMENTO INTL (SMF)  
SACRAMENTO, CALIFORNIA

RNAV 1 - DME/DME/IRU or GPS.  
RADAR required.

OAKLAND CENTER  
132.8 319.1  
NORCAL APP CON  
124.8 263.15  
D-ATIS  
126.75  
CAPITOL TOWER  
125.7 256.7  
GND CON  
121.7 256.7



NOTE: Expect runway assignment prior to PNNEN.

## ARRIVAL ROUTE DESCRIPTION

### NURAY TRANSITION (NURAY.SUUTR4)

From SUUTR on track 308° to cross FOOLZ at FL210, then on track 308° to cross GLDDD at or below FL190, then on track 308° to cross WRAPS at or below 17000, then on track 308° to cross PNNEN between 12000 and 16000 and at 280K, then on track 298° to SLUIC.

LANDING RUNWAYS 17L/R: From SLUIC on track 298° to cross AMADR at 9000, then on track 302° to cross NGGET between 7000 and 9000, then on track 309° to cross CHNEL at or above 5000, then on track 330° to cross OVOME at 4000 and at 210K, then on track 348°. Expect assigned instrument approach or RADAR vectors to final approach course.

LANDING RUNWAYS 35L/R: From SLUIC on track 298° to cross MYNRR at 9000, then on track 299°. Expect assigned instrument approach procedure or RADAR vectors to final approach course.

NOTE: Chart not to scale.

10 NM

SW-2, 20 MAR 2025 to 17 APR 2025

SW-2, 20 MAR 2025 to 17 APR 2025

# SUUTR FOUR ARRIVAL (RNAV)

(SUUTR.SUUTR4) 14JUL22

SACRAMENTO, CALIFORNIA  
SACRAMENTO INTL (SMF)