

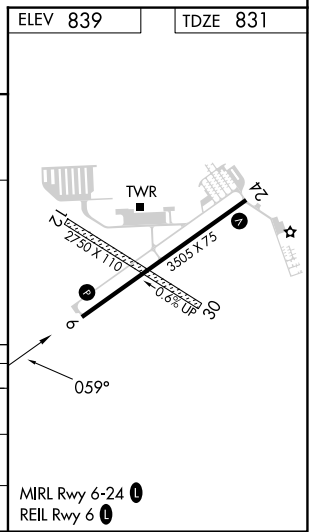
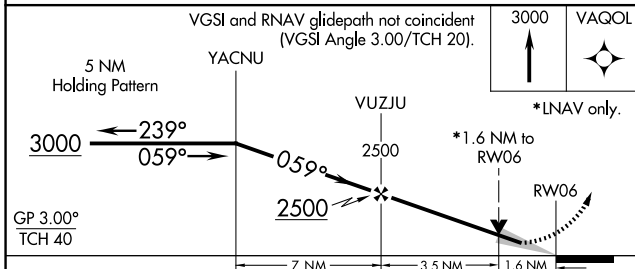
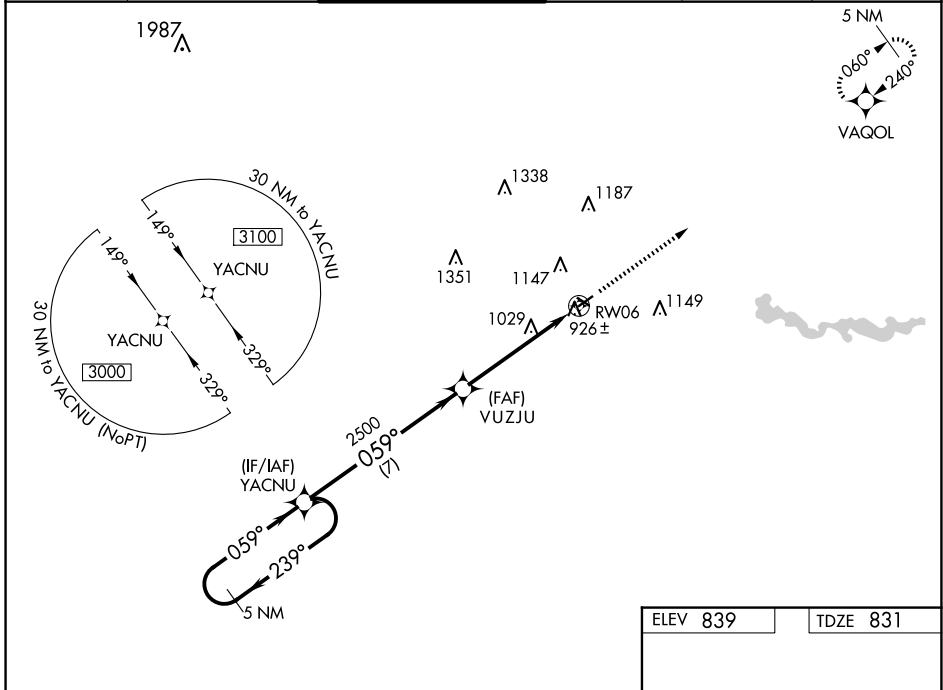
WAAS CH <b>77601</b> <b>W06A</b>	APP CRS <b>059°</b>	Rwy Idg TDZE Apt Elev	<b>3505</b> <b>831</b> <b>839</b>
----------------------------------------	------------------------	-----------------------------	-----------------------------------------

# RNAV (GPS) RWY 6

ANN ARBOR MUNI (ARB)

RNP APCH.	MISSED APPROACH: Climb to 3000 direct VAQOL and hold.
<p>⚠ For uncompensated Baro-VNAV systems, LNAV/VNAV NA below -16°C or above 38°C. VDP and Baro-VNAV NA when using Willow Run altimeter setting. When local altimeter setting not received, use Willow Run altimeter setting and increase all DA/MDA 40 feet; increase LNAV Cats C and D visibility 1/8 SM.</p>	

ATIS <b>134.55</b>	DETROIT APP CON <b>118.95 284.0</b>	ANN ARBOR TOWER * <b>120.3 (CTAF) 0</b>	GND CON <b>121.6</b>	CLNC DEL <b>121.6</b>	UNICOM <b>123.0</b>
-----------------------	----------------------------------------	--------------------------------------------	-------------------------	--------------------------	------------------------



CATEGORY	A	B	C	D
LPV DA	1081-1 250 (300-1)			
LNAV/VNAV DA	1097-1 266 (300-1)			
LNAV MDA	1360-1	529 (600-1)	1360-1½	529 (600-1½)

EC-1, 20 MAR 2025 to 17 APR 2025

EC-1, 20 MAR 2025 to 17 APR 2025