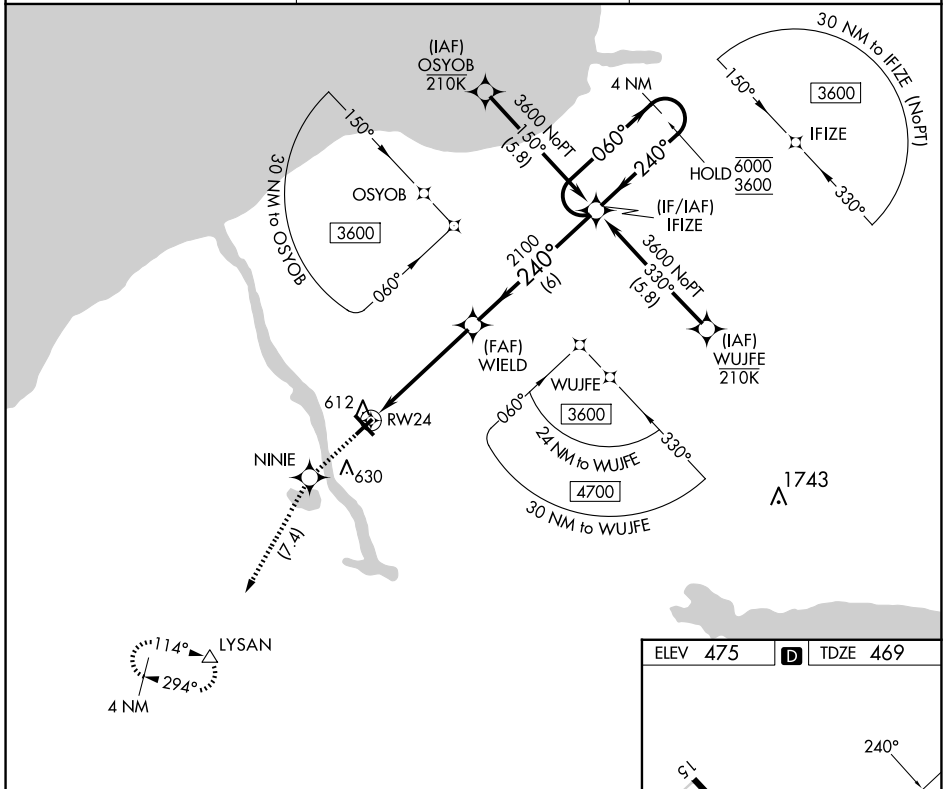


APP CRS 240°	Rwy Idg TDZE Apt Elev	3997 469 475
------------------------	-----------------------------	---

RNAV (GPS) RWY 24

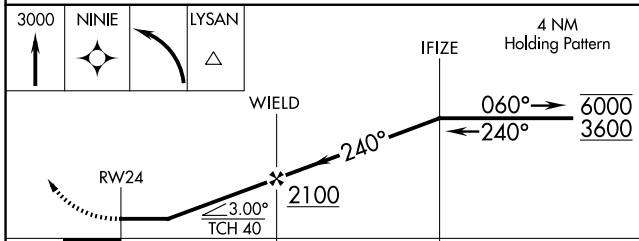
OSWEGO COUNTY (FZY)

RNP APCH - GPS.		MISSED APPROACH: Climb to 3000 direct NINIE and left turn direct LYSAN and hold, continue climb-in-hold to 3000.
Rwy 24 helicopter visibility reduction below 1 SM NA.		
ASOS 119.275	SYRACUSE APP CON 126.125 269.125	UNICOM 123.0 (CTAF) 0

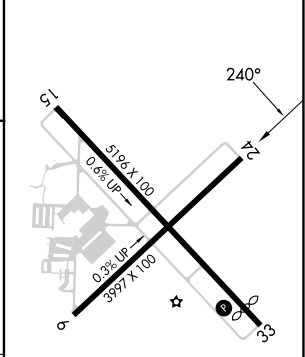


NE-2, 20 MAR 2025 to 17 APR 2025

NE-2, 20 MAR 2025 to 17 APR 2025



ELEV 475	D	TDZE 469
----------	----------	----------



CATEGORY	A	B	C	D
LNVA MDA	960-1	491 (500-1)	960-1 $\frac{3}{8}$	491 (500-1 $\frac{3}{8}$)
CIRCLING	960-1	485 (500-1)	960-1 $\frac{1}{2}$	1040-2
			485 (500-1 $\frac{1}{2}$)	565 (600-2)

MIRL Rwy 6-24 0
HIRL Rwy 15-33 0
REIL Rwy 15 and 33 0
REIL Rwy 6 and 24