

BORRN SIX DEPARTURE (RNAV)

HOUSTON, TEXAS

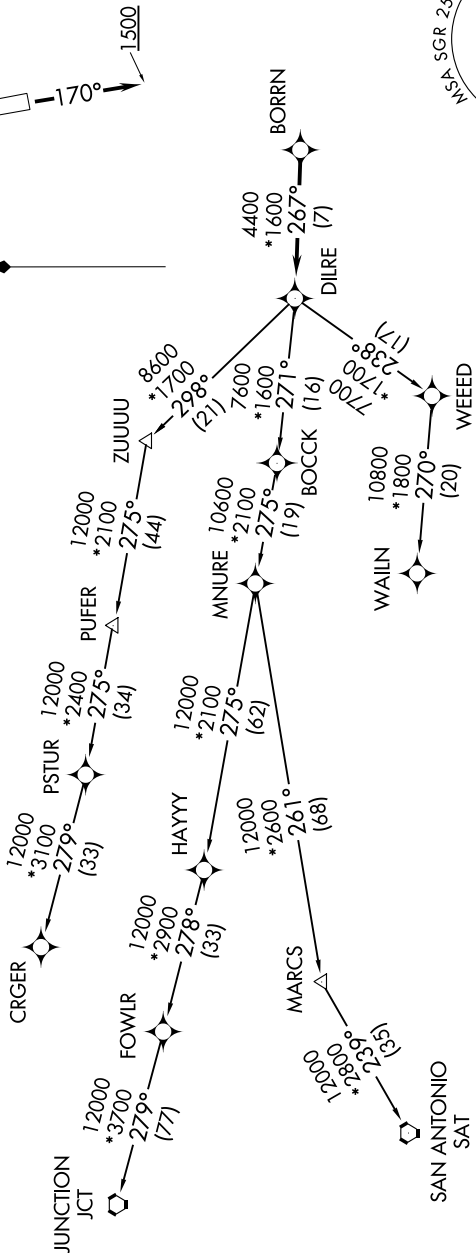
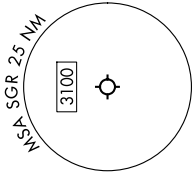
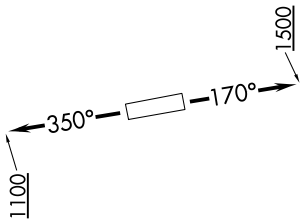
SC-5, 20 MAR 2025 to 17 APR 2025

TOP ALTITUDE:
ASSIGNED BY ATC

RNAV 1 - DME/DME/IRU or GPS.
RADAR required.

ATIS 118.125
CLNC DEL 121.4
CLNC DEL (When twr closed) 119.25
GND CON 121.4
SUGAR LAND TOWER* 118.65 (CTAF)
HOUSTON DEP CON 123.8 257.7

TAKEOFF MINIMUMS
Rwys 17, 35: Standard with minimum climb of 500'/NM to 600.



NOTE: CRGR-TRANSITION ATC assigned only for aircraft departing 54T, AXH, EFD, GLS, HPY, IWS, LBX, LVJ, SGR, TME, T00, T41.

(CONTINUED ON FOLLOWING PAGE)

SC-5, 20 MAR 2025 to 17 APR 2025

BORRN SIX DEPARTURE (RNAV)

(BORRN6.BORRN) 30NOV23

HOUSTON, TEXAS

SUGAR LAND RGNL (SGR)