

CRIED ONE DEPARTURE


AL-5537 (FAA)

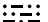
SUGAR LAND RGNL (SGR)


HOUSTON, TEXAS


ATIS
 118.125
 CLNC DEL
 121.4
 CLNC DEL
 119.25 (when twr closed)
 GND CON
 121.4
 SUGAR LAND TOWER*
 118.65 (CTAF)
 HOUSTON DEP CON
 123.8 257.7

**TOP ALTITUDE:
 ASSIGNED BY ATC**

CEDAR CREEK
 114.8 CGY 
 Chan 95

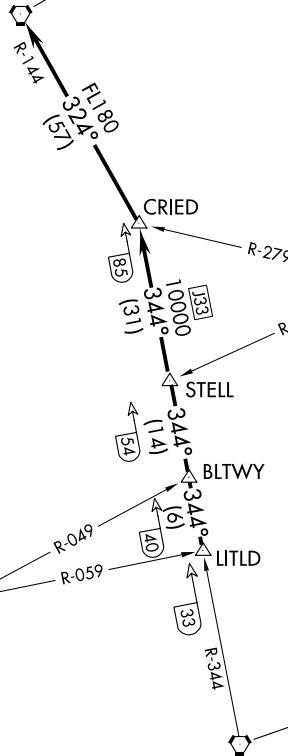
LUFKIN
 112.1 LFK 
 Chan 58

NAVASOTA
 115.9 TNV 
 Chan 106

HUMBLE
 116.6 IAH 
 Chan 113

TAKEOFF MINIMUMS
 Rwys 17, 35: Standard.

NOTE: RADAR required.



SC-5, 20 MAR 2025 to 17 APR 2025

SC-5, 20 MAR 2025 to 17 APR 2025

(CONTINUED ON FOLLOWING PAGE)

NOTE: Chart not to scale.

CRIED ONE DEPARTURE

HOUSTON, TEXAS

SUGAR LAND RGNL (SGR)