

(INDIE8.INDIE) 25051

AL-5537 (FAA)

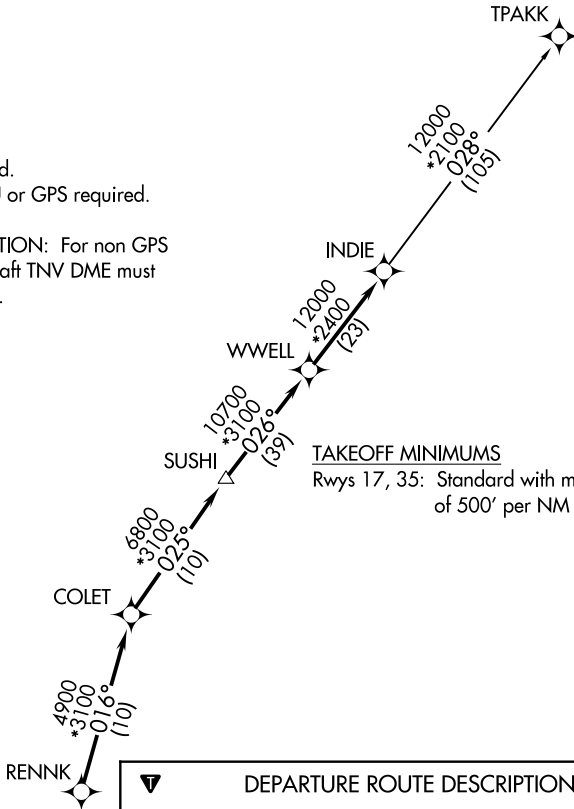
SUGAR LAND RGNL (SGR)  
HOUSTON, TEXAS

# INDIE EIGHT DEPARTURE (RNAV)

ATIS  
118.125  
CLNC DEL  
121.4  
CLNC DEL  
119.25 (when twr closed)  
GND CON  
121.4  
SUGARLAND TOWER\*  
118.65 (CTAF)  
HOUSTON DEP CON  
123.8 257.7

**TOP ALTITUDE:  
ASSIGNED BY ATC**

- NOTE: RADAR required.
- NOTE: DME/DME/IRU or GPS required.
- NOTE: RNAV 1.
- NOTE: TPAKK TRANSITION: For non GPS equipped aircraft TNV DME must be operational.



**TAKEOFF MINIMUMS**  
Rwys 17, 35: Standard with minimum climb of 500' per NM to 600.

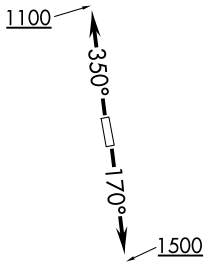
**DEPARTURE ROUTE DESCRIPTION**

TAKEOFF RUNWAY 17: Climb on heading 170° to 1500 for RADAR vectors to RENNK, then . . . .

TAKEOFF RUNWAY 35: Climb on heading 350° to 1100 for RADAR vectors to RENNK, then . . . .

. . . . on track 016° to COLET, then on track 025° to SUSHI, then on track 026° to WWELL, then on track 026° to INDIE, then on (transition). Maintain ATC assigned altitude. Expect filed altitude 10 minutes after departure.

TPAKK TRANSITION (INDIE8.TPAKK)



NOTE: Chart not to scale.

SC-5, 20 MAR 2025 to 17 APR 2025

SC-5, 20 MAR 2025 to 17 APR 2025

INDIE EIGHT DEPARTURE (RNAV)  
(INDIE8.INDIE) 07OCT21

HOUSTON, TEXAS  
SUGAR LAND RGNL (SGR)