

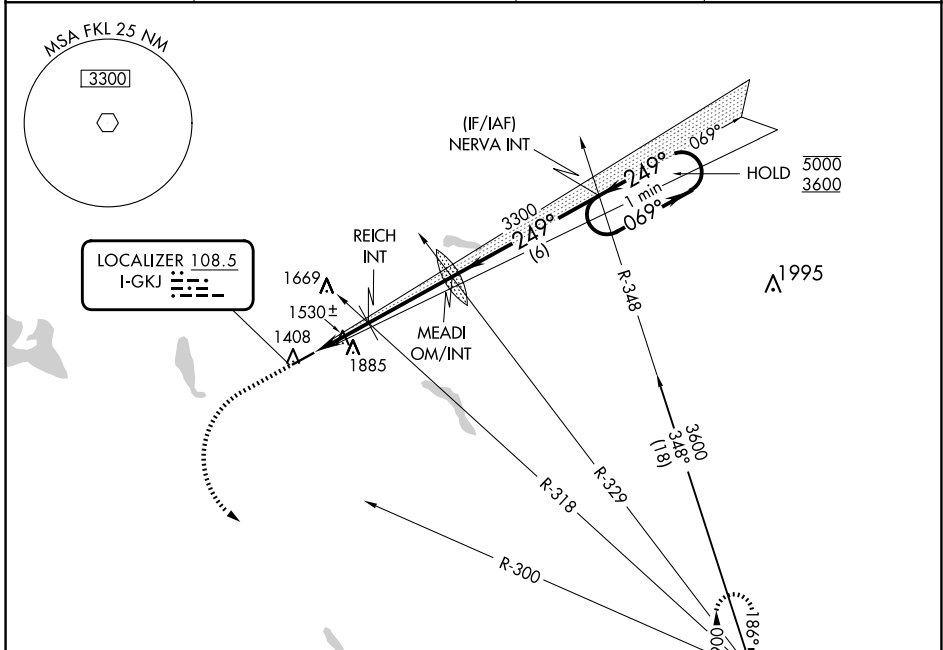
LOC I-GKJ 108.5	APP CRS 249°	Rwy Idg TDZE Apt Elev	5001 1399 1399
---------------------------	------------------------	-----------------------------	---

LOC RWY 25

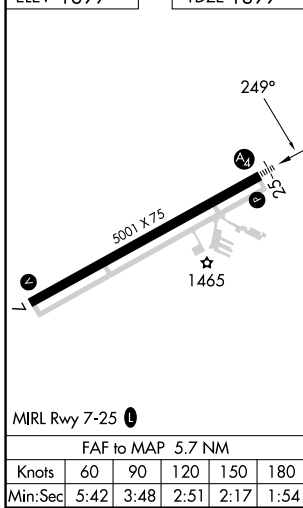
PORT MEADVILLE (GKJ)

RADAR required.		MALS	MISSED APPROACH: Climb to 2000 then climbing left turn to 3600 on heading 125° and FKL VOR R-300 to FKL VOR and hold.
<p>▼ Inop table does not apply.</p> <p>▲ Rwy 25 helicopter visibility reduction below 3/4 SM NA.</p>			

ASOS 121.425	YOUNGSTOWN APP CON* 133.95 322.3	CLNC DEL 124.95	UNICOM 123.0 (CTAF) 0
------------------------	--	---------------------------	---------------------------------



ELEV 1399	TDZE 1399
-----------	-----------



	2000	3600	FKL R-300	FKL	MEADI OM/INT	NERVA INT	One Minute Holding Pattern
	↑	hdg 125°					
				REICH INT	3300	5000	3600
				3.09°	249°	069°	249°
				TCH 41	2140		
				2.4 NM	3.3 NM	6 NM	
CATEGORY	A		B		C		D
S-LOC 25	1780-1		381 (400-1)		1780-1 7/8		381 (400-1 7/8)
CIRCLING	1900-1		2240-1 1/4		2240-2 1/2		2240-2 3/4
	501 (600-1)		841 (900-1 1/4)		841 (900-2 1/2)		841 (900-2 3/4)

NE-4, 20 MAR 2025 to 17 APR 2025

NE-4, 20 MAR 2025 to 17 APR 2025