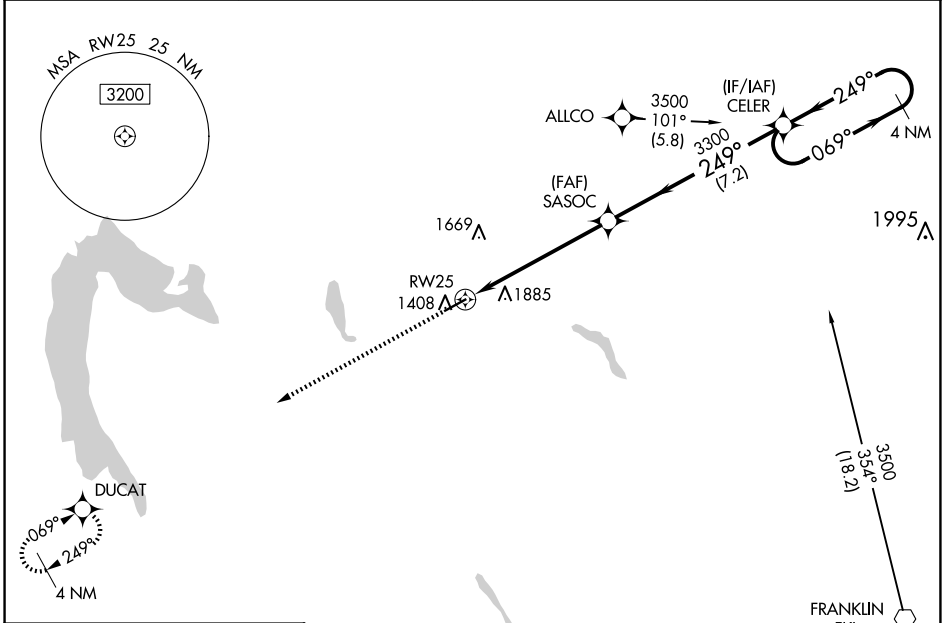


WAAS CH <b>45924</b> W25A	APP CRS <b>249°</b>	Rwy ldg TDZE Apt Elev	<b>5001</b> <b>1399</b> <b>1399</b>
---------------------------------	------------------------	-----------------------------	---

# RNAV (GPS) RWY 25

PORT MEADVILLE (GKJ)

RNP APCH.		MALS	MISSED APPROACH: Climb to 3000 direct DUCAT and hold.
<p>⚠ Inop table does not apply to LP Cats A and B, and LNAV Cat A. For inop ALS increase LNAV Cats C and D visibility to 2 SM.</p>			
ASOS <b>121.425</b>	YOUNGSTOWN APP CON * <b>133.95 322.3</b>	CLNC DEL <b>124.95</b>	UNICOM <b>123.0 (CTAF)</b>

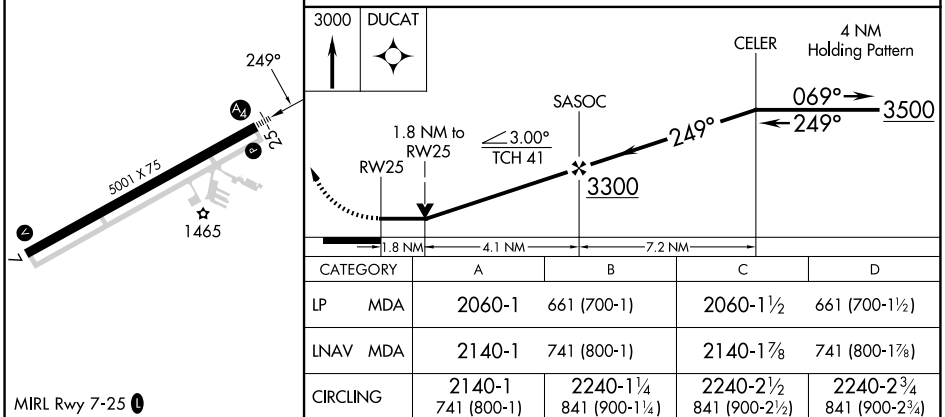


NE-4, 20 MAR 2025 to 17 APR 2025

NE-4, 20 MAR 2025 to 17 APR 2025

ELEV 1399	TDZE 1399
-----------	-----------

Procedure NA for arrival on FKL VOR  
airway radials 280 CW 056.



MIRL Rwy 7-25