

# HI-ILS Z or LOC Z RWY 14

LOC I-CZH <b>110.5</b>	APCH CRS <b>137°</b>	Rwy Idg 7701
		TDZE 27
		Arprt Elev 30

[USAF]

JACKSONVILLE INTL (KJAX)

DME required. RADAR required for procedure entry.



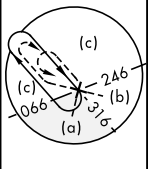
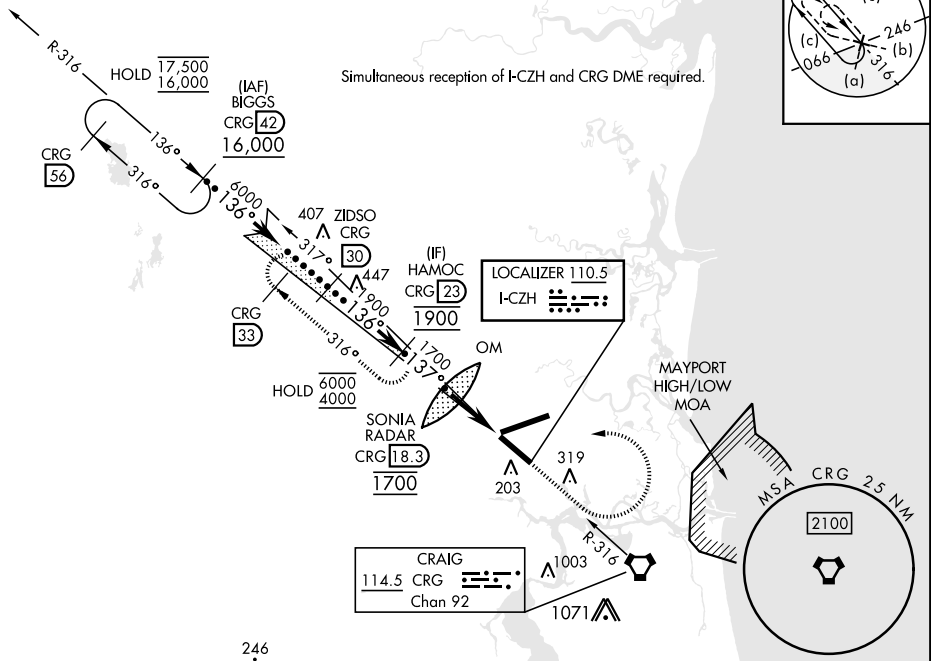
MISSED APPROACH: Climb to 2000 then climbing left turn to 4000 on CRG R-316 to HAMOC 23 DME and hold.

★ When ALS inop, increase vis to ¾ mile.  
★★ When ALS inop, increase vis to 1 mile.

ATIS <b>125.85</b>	APP CON <b>119.0 269.9</b>	TOWER <b>118.3 317.7</b>	GND CON <b>121.9 348.6</b>	CLNC DEL <b>119.5 290.275</b>
-----------------------	-------------------------------	-----------------------------	-------------------------------	----------------------------------

Rwy 14 helicopter visibility reduction below ¾ mile NA. Autopilot coupled approach NA below 750.

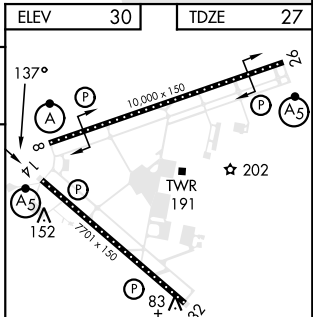
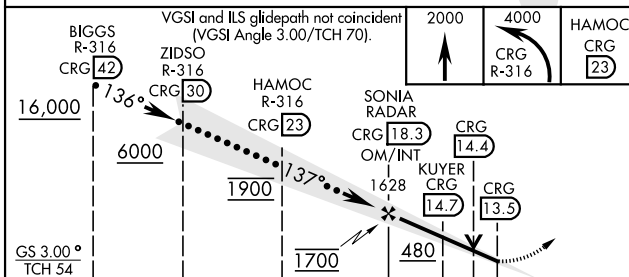
Simultaneous reception of I-CZH and CRG DME required.



SE-3, 20 MAR 2025 to 17 APR 2025

SE-3, 20 MAR 2025 to 17 APR 2025

EMERG SAFE ALT 100 NM 2800 FROM CRG VORTAC



CATEGORY	C	D	E
S-ILS 14 *	227-½	200 (200-½)	
S-LOC 14 **	380-¾	353 (400-¾)	
CIRCLING	580-1½ 550 (600-1½)	640-2 610 (700-2)	760-2½ 730 (800-2½)

HIRL Rwy 8-26, 14-32 REIL Rwy 32 TDZL/CL Rwy 8, 14, 26
FAF to MAP 4.8 NM
Knots: 120 140 160 180 200
Min:Sec: 2:24 2:03 1:48 1:36 1:26

# HI-ILS Z or LOC Z RWY 14