

# HI-ILS Z or LOC Z RWY 8

LOC I-JAX <b>110.7</b>	APCH CRS <b>077°</b>	Rwy Ildg <b>10,000</b> TDZE <b>30</b> Arprt Elev <b>30</b>
---------------------------	-------------------------	--

[USAF]

JACKSONVILLE INTL (KJAX)

DME required. RADAR required for procedure entry.

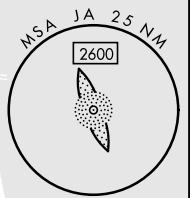
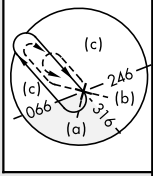
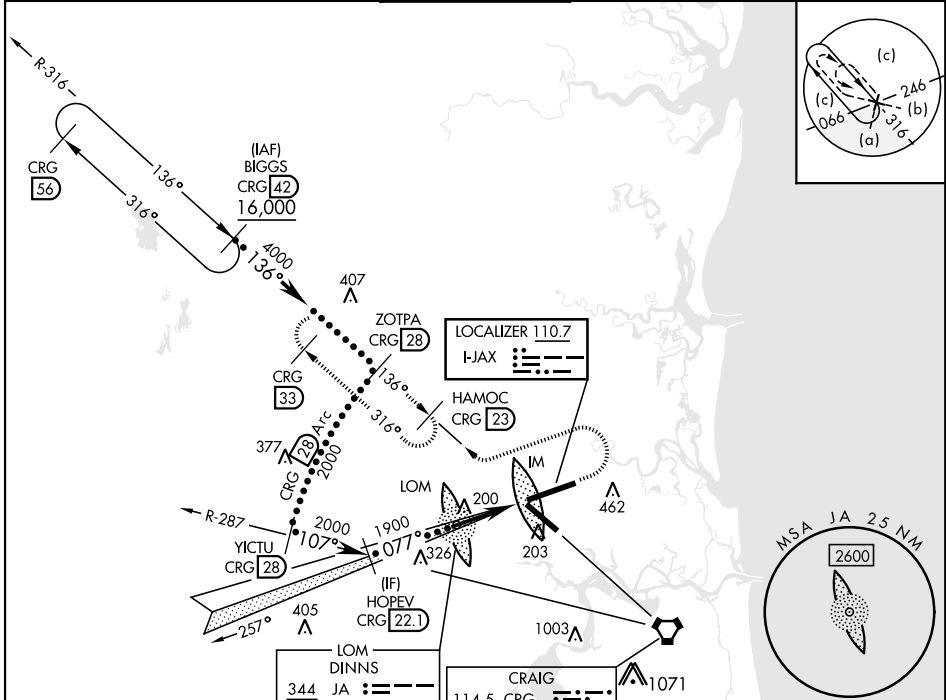
- ▼ \* When ALS inop, increase CAT E RVR to 40, vis to ¾ mile.
- ▲ \*\* When ALS inop, increase CAT E vis to 1¾ miles.

ALSF-2

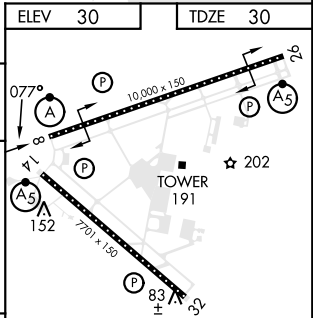
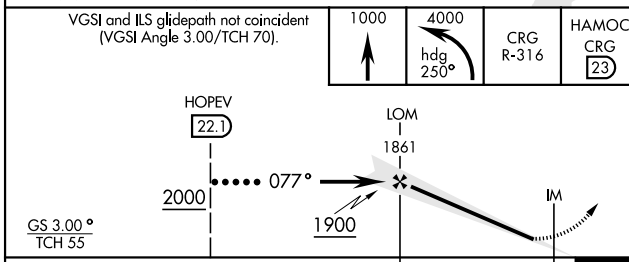


MISSED APPROACH: Climb to 1000 then climbing left turn to 4000 on heading 250° and on CRG R-316 to HAMOC/CRG 23 DME and hold, continue climb-in-hold to 4000.

ATIS <b>125.85</b>	APP CON <b>119.0 269.9</b>	TOWER <b>118.3 317.7</b>	GND CON <b>121.9 348.6</b>	CLNC DEL <b>119.5 290.275</b>
-----------------------	-------------------------------	-----------------------------	-------------------------------	----------------------------------



EMERG SAFE ALT 100 NM 2600



CATEGORY	C	D	E
S-ILS 8 *	230/18	200	(200-½)
S-LOC 8 **	480/45	450	(500-¾)
CIRCLING	580-1½	580-2	760-2½
	550 (600-1½)	550 (600-2)	730 (800-2½)

REIL Rwy 32  
HIRL Rwy 8-26, 14-32  
TDZL/CL Rwy 8-26, 14

FAF to MAP 5.6 NM

Knots	120	140	160	180	200
Min:Sec	2:48	2:24	2:06	1:52	1:41

# HI-ILS Z or LOC Z RWY 8

SE-3, 20 MAR 2025 to 17 APR 2025

SE-3, 20 MAR 2025 to 17 APR 2025