

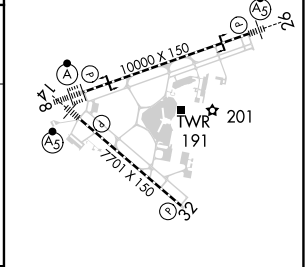
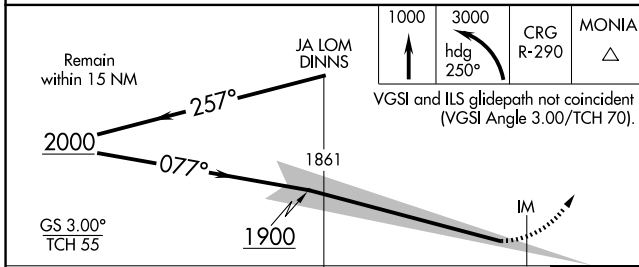
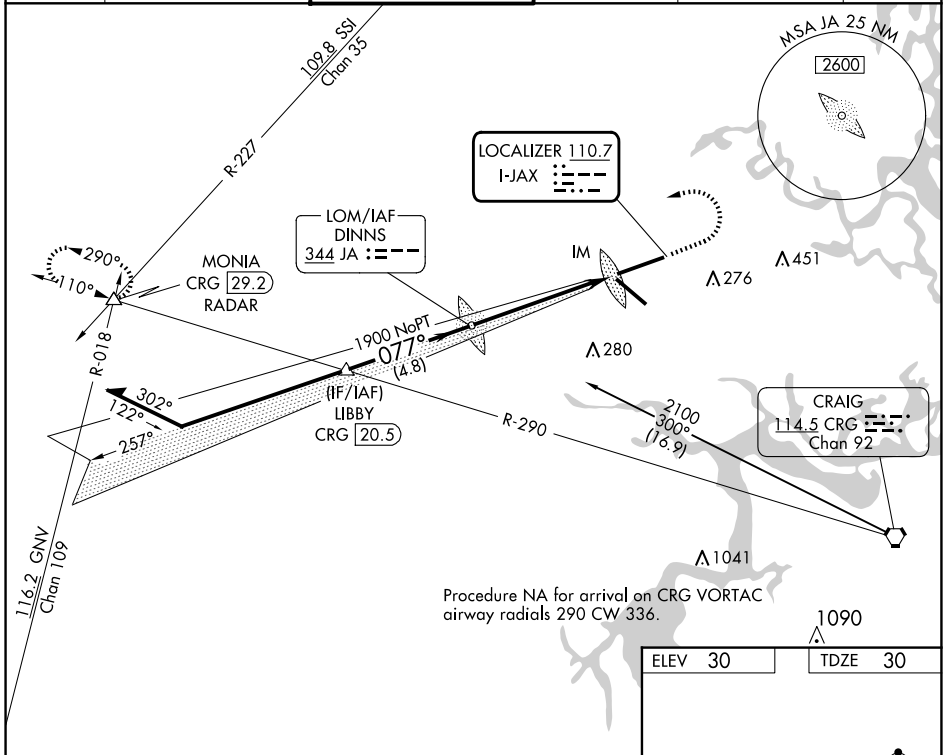
LOC I-JAX <b>110.7</b>	APP CRS <b>077°</b>	Rwy ldg TDZE Apt Elev	<b>10000</b> <b>30</b> <b>30</b>
---------------------------	------------------------	-----------------------------	----------------------------------------

# ILS Y RWY 8 (SA CAT I)

JACKSONVILLE INTL (JAX)

Requires specific OPSPEC, MSPEC, or LOA approval.	ALSF-2 	MISSED APPROACH: Climb to 1000 then climbing left turn to 3000 on heading 250° and on CRG VORTAC R-290 to MONIA INT/CRG 29.2 DME/RADAR and hold.

D-ATIS <b>125.85</b>	JACKSONVILLE APP CON <b>119.0 269.9</b>	JACKSONVILLE TOWER <b>118.3 317.7</b>	GND CON <b>121.9 348.6</b>	CLNC DEL <b>119.5 290.275</b>	CPDLC
-------------------------	--------------------------------------------	------------------------------------------	-------------------------------	----------------------------------	-------



CATEGORY	A	B	C	D
S-ILS 8	RA 175/14 150 DA 180			

**SA CATEGORY I - SPECIAL AIRCREW & AIRCRAFT CERTIFICATION REQUIRED**

REIL Rwy 32  
TDZ/CL Rws 8, 14, and 26  
HIRL Rws 8-26 and 14-32

SE-3, 20 MAR 2025 to 17 APR 2025

SE-3, 20 MAR 2025 to 17 APR 2025