

| | | |
|-------------|----------|-------------|
| APP CRS | Rwy Idg | 7701 |
| 137° | TDZE | 27 |
| | Apt Elev | 29 |

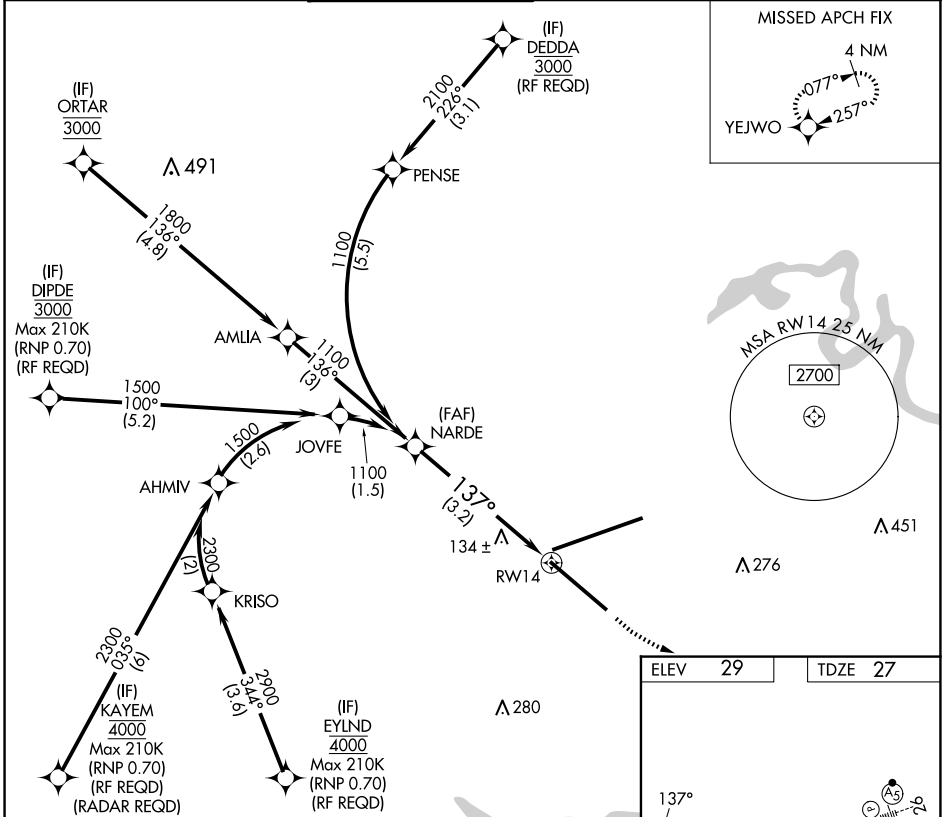
RNAV (RNP) Y RWY 14

JACKSONVILLE INTL (JAX)

For uncompensated Baro-VNAV systems, procedure NA below -5°C (23°F) or above 54°C (130°F). GPS required. For inoperative MALSR, increase RNP 0.30 all Cats

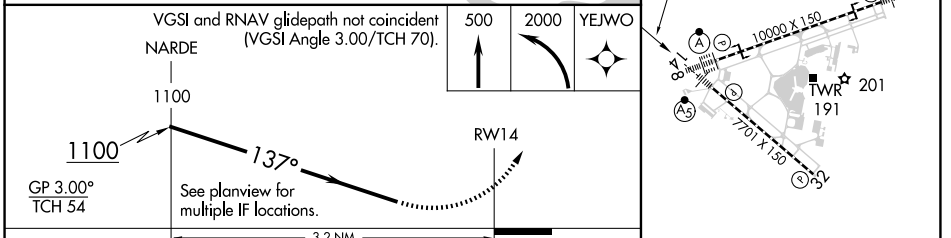
MALSR MISSED APPROACH: Climb to 500 then climbing left turn to 2000 direct YEJWO and hold.

| | | | | | |
|---------------|----------------------|--------------------|--------------------|----------------------|-------|
| D-ATIS | JACKSONVILLE APP CON | JACKSONVILLE TOWER | GND CON | CLNC DEL | CPDLC |
| 125.85 | 119.0 269.9 | 118.3 317.7 | 121.9 348.6 | 119.5 290.275 | |



SE-3, 20 MAR 2025 to 17 APR 2025

SE-3, 20 MAR 2025 to 17 APR 2025



| | | | | |
|-------------------------------|---|-------|-------------|---|
| CATEGORY | A | B | C | D |
| RNP 0.30 DA | | 389-1 | 362 (400-1) | |
| AUTHORIZATION REQUIRED | | | | |

| | | | |
|------|----|------|----|
| ELEV | 29 | TDZE | 27 |
|------|----|------|----|

REIL Rwy 32
 TDZ/CL Rwys 8, 14, and 26
 HIRL Rwys 8-26 and 14-32