

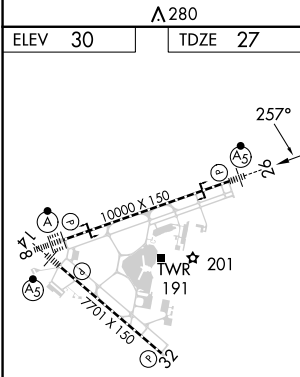
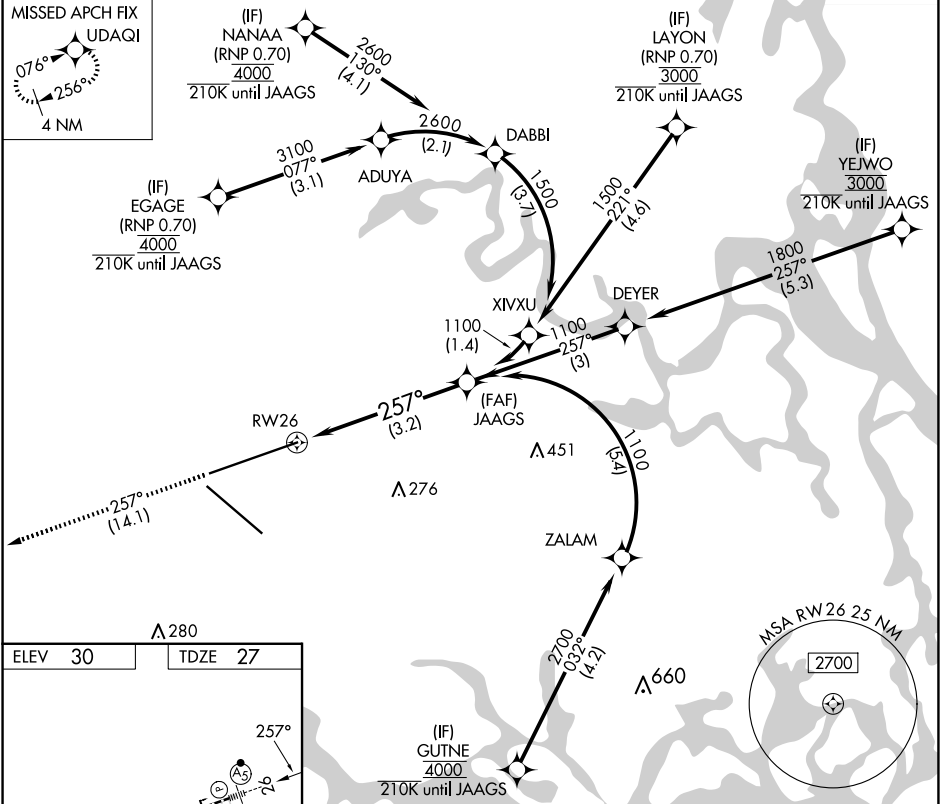
# RNAV (RNP) Y RWY 26

JACKSONVILLE INTL (JAX)

APP CRS	Rwy Idg	<b>10000</b>
<b>257°</b>	TDZE	<b>27</b>
	Apt Elev	<b>30</b>

RNP AR APCH-GPS.	MALS R	MISSED APPROACH: Climb to 2000 on track 257° to UDAQI and hold.
For uncompensated Baro-VNAV systems, procedure NA below -5°C or above 54°C.		

D-ATIS	JACKSONVILLE APP CON	JACKSONVILLE TOWER	GND CON	CLNC DEL	CPDLC
<b>125.85</b>	<b>119.0 269.9</b>	<b>118.3 317.7</b>	<b>121.9 348.6</b>	<b>119.5 290.275</b>	



2000	UDAQI	VGSi and RNAV glidepath not coincident (VGSi Angle 3.00/TCH 70).	
See planview for multiple IF locations.			
RW26		JAAGS 1100 1100 GP 3.00° TCH 49	
3.2 NM			
CATEGORY	A	B	C
RNP 0.30 DA	419/35 392 (400-5%)		

REIL Rwy 32  
 TDZ/CL Rwy 8, 14, and 26  
 HIRL Rwy 8-26 and 14-32

**AUTHORIZATION REQUIRED**

SE-3, 20 MAR 2025 to 17 APR 2025

SE-3, 20 MAR 2025 to 17 APR 2025