

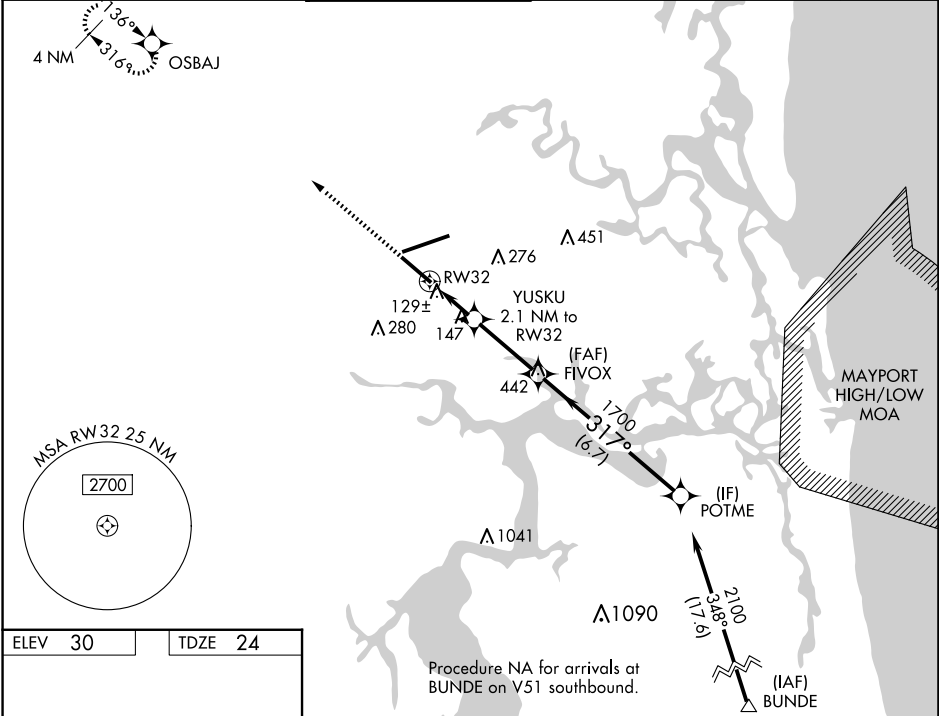
WAAS CH 40199 W32A	APP CRS 317°	Rwy Idg TDZE Apt Elev	7701 24 30
--	------------------------	-----------------------------	---------------------------------------

RNAV (GPS) Z RWY 32

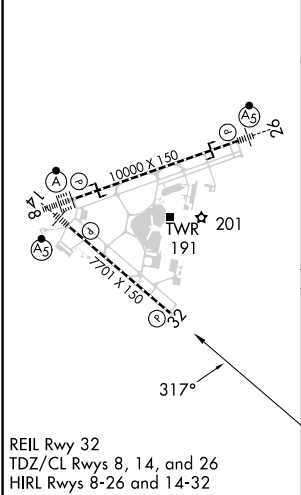
JACKSONVILLE INTL (JAX)

RNP APCH-GPS	<p>▼ For uncompensated Baro-VNAV systems, LNAV/VNAV NA below -5°C or above 54°C. Rwy 32 helicopter visibility reduction below ¾ SM NA.</p>	MISSED APPROACH: Climb to 2000 direct OSBAJ and hold.
--------------	--	---

D-ATIS 125.85	JACKSONVILLE APP CON 119.0 269.9	JACKSONVILLE TOWER 118.3 317.7	GND CON 121.9 348.6	CLNC DEL 119.5 290.275	CPDLC
-------------------------	--	--	-------------------------------	----------------------------------	-------



ELEV 30	TDZE 24
---------	---------



2000 OSBAJ	VGSi and RNAV glidepath not coincident (VGSi Angle 3.00/TCH 67).			POTME
↑	YUSKU 2.1 NM to RW32	FIVOX 1700	317°	2100
	1 NM to RW32	740	1700	GP 3.00° TCH 50
	1 NM	-1.1 NM	3 NM	6.7 NM
CATEGORY	A	B	C	D
LPV DA	336-1 312 (400-1)			
LNAV/VNAV DA	387-1¼ 363 (400-1¼)			
LNAV MDA	400-1 376 (400-1)			
CIRCLING	520-1 490 (500-1)	580-1½ 550 (600-1½)	580-2	550 (600-2)

SE-3, 20 MAR 2025 to 17 APR 2025

SE-3, 20 MAR 2025 to 17 APR 2025