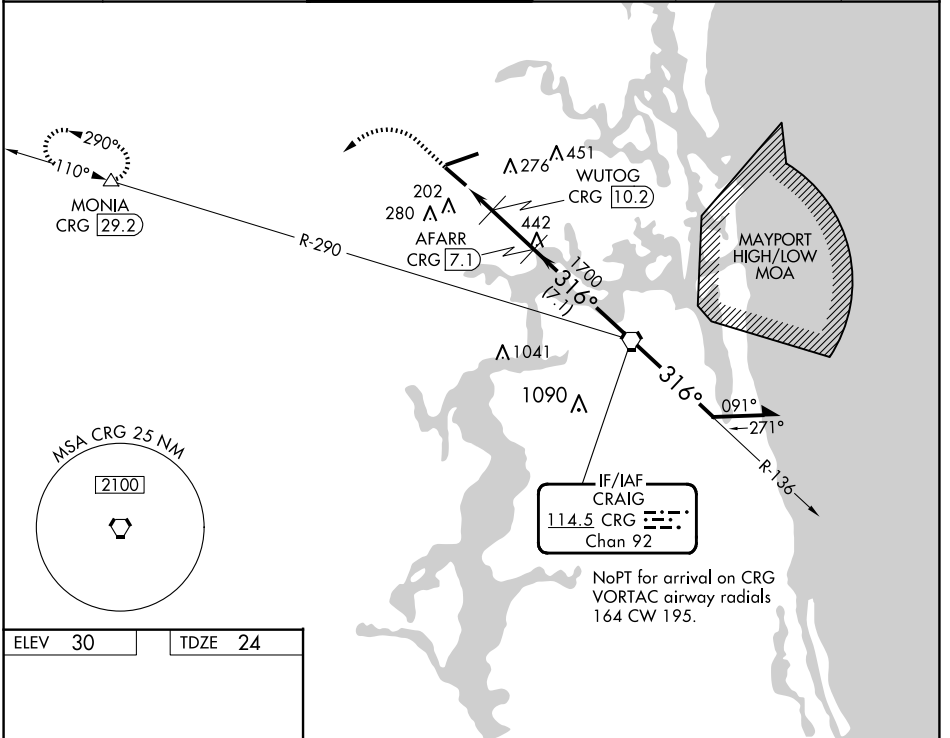


VORTAC CRG <b>114.5</b> Chan <b>92</b>	APP CRS <b>316°</b>	Rwy Idg TDZE Apt Elev	<b>7701</b> <b>24</b> <b>30</b>
--	------------------------	-----------------------------	---------------------------------------

# VOR/DME RWY 32

JACKSONVILLE INTL (JAX)

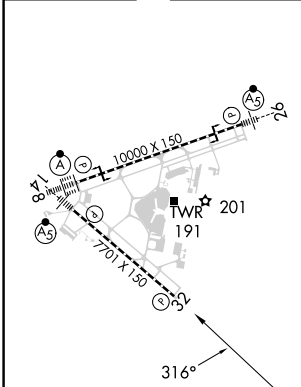
<p><b>▼</b> Rwy 32 helicopter visibility reduction by below 3/4 SM NA. <b>▲</b> Cat E procedure turn NA.</p>		<p>MISSED APPROACH: Climb to 1000 then climbing left turn to 3000 on heading 250° and on CRG VORTAC R-290 to MONIA/CRG 29.2 DME and hold.</p>			
D-ATIS <b>125.85</b>	JACKSONVILLE APP CON <b>119.0 269.9</b>	JACKSONVILLE TOWER <b>118.3 317.7</b>	GND CON <b>121.9 348.6</b>	CLNC DEL <b>119.5 290.275</b>	CPDLC



SE-3, 20 MAR 2025 to 17 APR 2025

SE-3, 20 MAR 2025 to 17 APR 2025

ELEV 30	TDZE 24
---------	---------



REIL Rwy 32  
TDZ/CL Rwy 8, 14, and 26  
HIRL Rwy 8-26 and 14-32

1000	3000	CRG R-290	MONIA	VGSI and ILS glidepath not coincident (VGSI Angle 3.05/TCH 68).	
↑	hdg 250°		△		
		AFARR CRG 7.1	WUTOG CRG 10.2	CRG VORTAC 6000	
		CRG 12.2	CRG 11.1	Remain within 10 NM	
		720	1700	136°	
				316°	
		1.1 0.9 → 3.1 NM	→ 7.1 NM		
CATEGORY	A	B	C	D	E
S-32	460-1	436 (500-1)	460-1 1/4	436 (500-1 1/4)	
CIRCLING	520-1	490 (500-1)	580-1 1/2 550 (600-1 1/2)	580-2 550 (600-2)	760-2 1/2 730 (800-2 1/2)