

WAAS CH 57925 W06A	APP CRS 059°	Rwy ldg 4201 TDZE 77 Apt Elev 81
--	------------------------	---

RNAV (GPS) RWY 6

BROOKHAVEN (HWV)

RNP APCH - GPS.

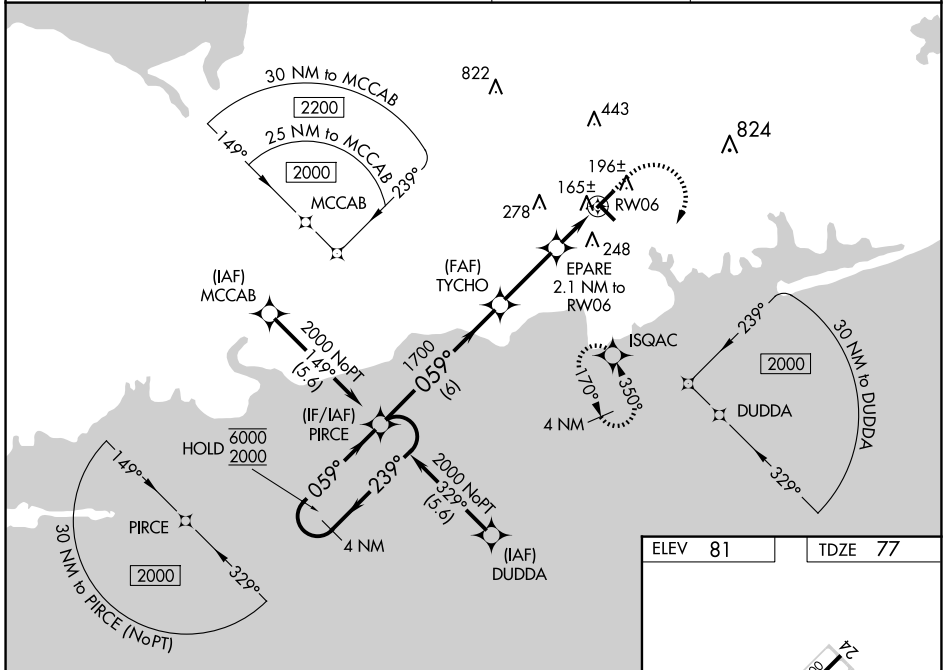
⚠ For uncompensated Baro-VNAV systems, LNAV/VNAV NA below -15°C or above 54°C.
 ⚠ Rwy 6 helicopter visibility reduction below 1 SM NA. Baro-VNAV and VDP NA when using ISP altimeter setting. When local altimeter setting not received, use ISP altimeter setting and increase LPV DA to 368 feet; increase LNAV/VNAV DA to 355 feet; increase all MDAs 40 feet. Inop table does not apply to LNAV/VNAV. For inop ALS, increase LPV all Cats visibility to 7/8 SM, increase LNAV all Cats visibility to 1 SM. For inop ALS when using ISP altimeter setting, increase LPV and LNAV/VNAV all Cats visibility to 7/8 SM, increase LNAV all Cats visibility to 1 SM. Circling Rwy 6, 15 NA at night.

MALSRL



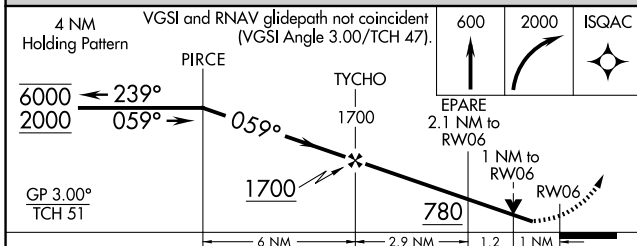
MISSED APPROACH:
Climb to 600 then climbing right turn to 2000 direct ISQAC and hold.

ASOS 119.625	NEW YORK APP CON 120.05 343.75	CLNC DEL 133.2	UNICOM 122.8 (CTAF) 0
------------------------	--	--------------------------	---------------------------------

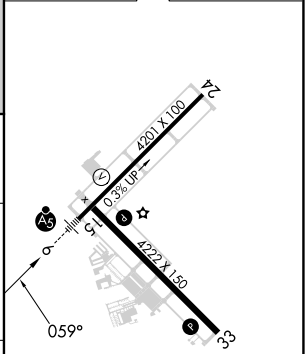


NE-2, 20 MAR 2025 to 17 APR 2025

NE-2, 20 MAR 2025 to 17 APR 2025



ELEV 81	TDZE 77
---------	---------



CATEGORY	A	B	C	D
LPV DA	340-3/4	263 (300-3/4)		NA
LNAV/VNAV DA	327-3/4	250 (300-3/4)		NA
LNAV MDA	420-3/4	343 (400-3/4)		NA
C CIRCLING	560-1	479 (500-1)		NA

REIL Rwy 15, 24 and 33 0
MIRL Rwy 6-24 and 15-33 0