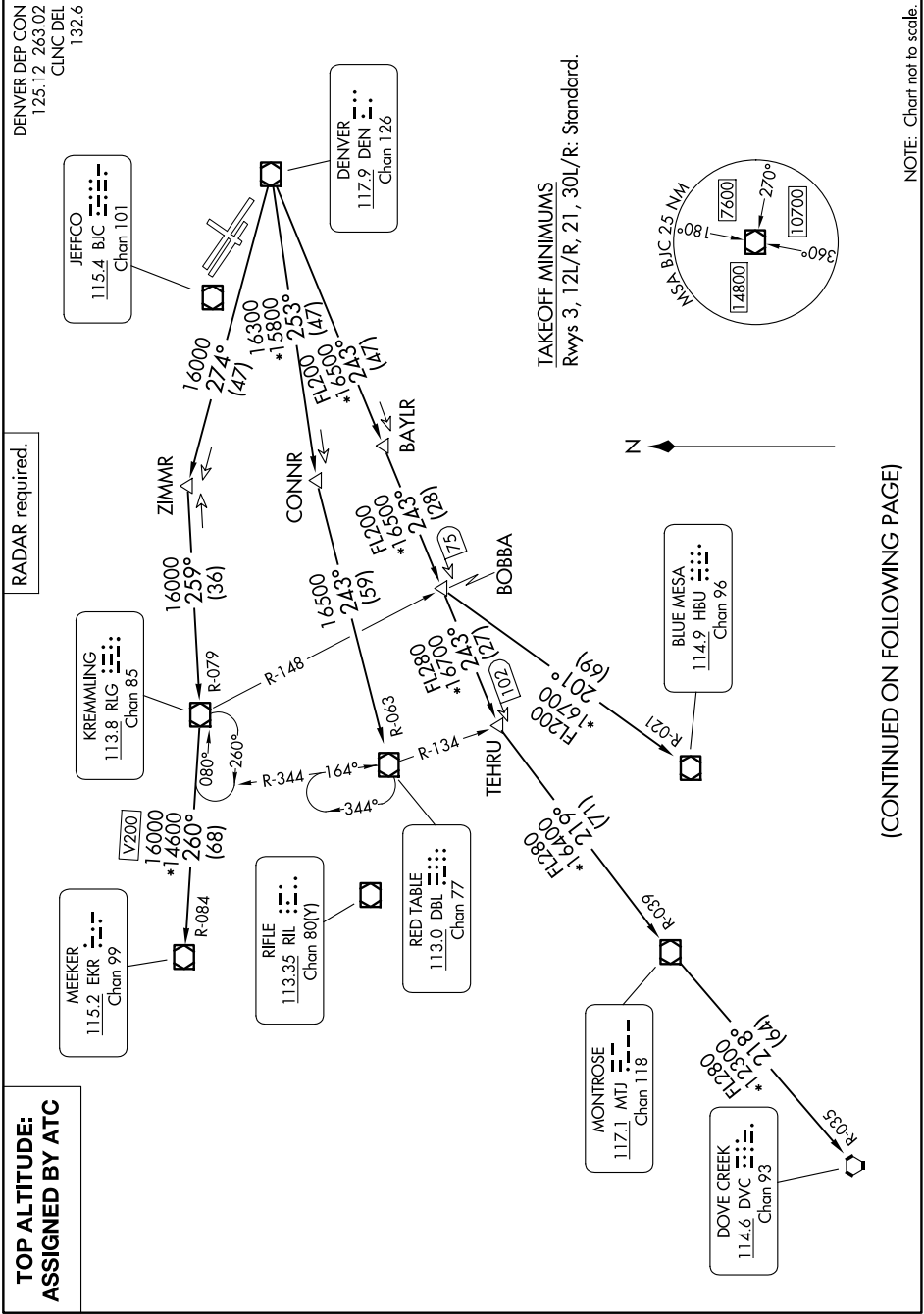


# ROCKIES SIX DEPARTURE

AL-5612 (FAA)

SW-1, 20 MAR 2025 to 17 APR 2025



**TOP ALTITUDE:  
ASSIGNED BY ATC**

**RADAR required.**

DENVER DEP CON  
125.12 263.02  
CLINC DEL  
132.6

MEERKER  
115.2 EKR  
Chan 99

KREMLING  
113.8 R/G  
Chan 85

JEFFCO  
115.4 B/C  
Chan 101

RIFLE  
113.35 RIL  
Chan 80(Y)

RED TABLE  
113.0 DBL  
Chan 77

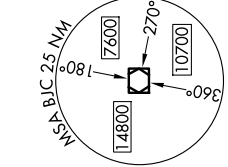
DENVER  
117.9 DEN  
Chan 126

**TAKEOFF MINIMUMS**  
Rwys 3, 12L/R, 21, 30L/R: Standard.

BLUE MESA  
114.9 HBU  
Chan 96

MONITROSE  
117.1 MTU  
Chan 118

DOVE CREEK  
114.6 DVC  
Chan 93



(CONTINUED ON FOLLOWING PAGE)

SW-1, 20 MAR 2025 to 17 APR 2025

NOTE: Chart not to scale.

# ROCKIES SIX DEPARTURE