

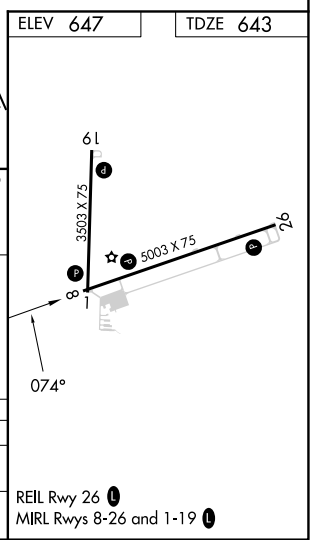
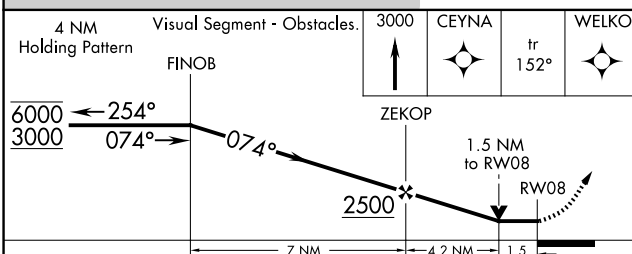
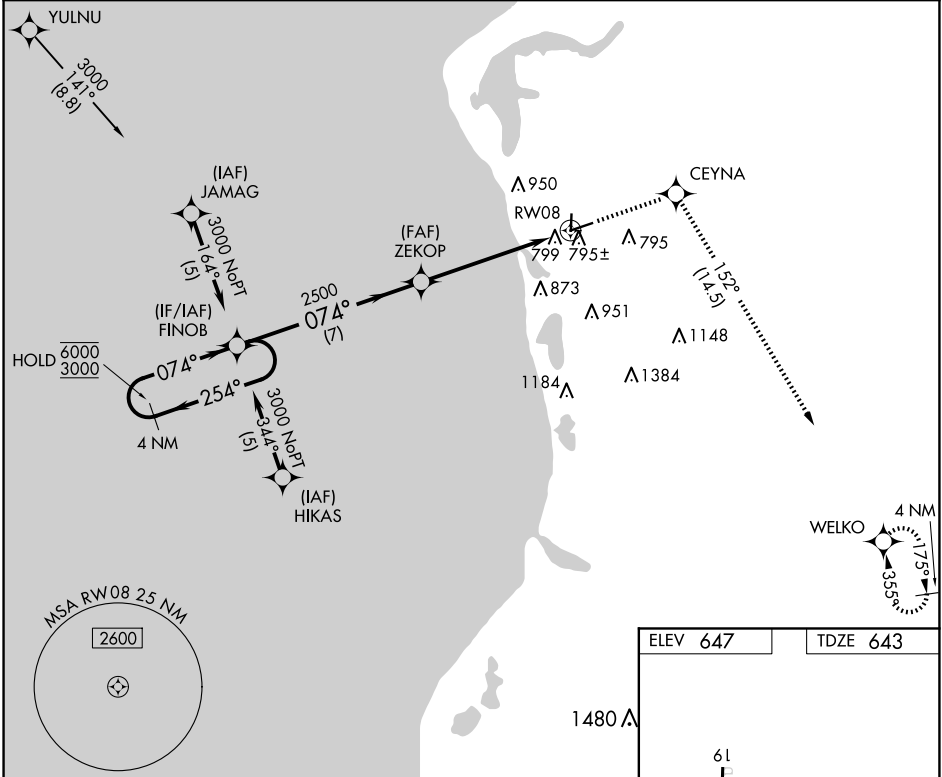
APP CRS	Rwy Idg	5003
074°	TDZE	643
	Apt Elev	647

RNAV (GPS) RWY 8

MASON COUNTY (LDM)

RNP APCH-GPS.	MISSED APPROACH: Climb to 3000 direct CEYNA and on track 152° to WELKO and hold.
<p>▼ Circling Rwy 1, 19 NA at night.</p> <p>▲ Rwy 8 helicopter visibility reduction below ¾ SM NA.</p>	

AWOS-3 119.925	MINNEAPOLIS CENTER 120.85 322.35	UNICOM 123.0 (CTAF) 0
--------------------------	--	---------------------------------



CATEGORY	A	B	C	D
LNVA MDA	1140-1	497 (500-1)	1140-1 $\frac{3}{8}$	497 (500-1 $\frac{3}{8}$)
CIRCLING	1160-1 513 (600-1)	1200-1 553 (600-1)	1260-1 $\frac{3}{4}$ 613 (700-1 $\frac{3}{4}$)	1460-2 $\frac{3}{4}$ 813 (900-2 $\frac{3}{4}$)

EC-1, 20 MAR 2025 to 17 APR 2025

EC-1, 20 MAR 2025 to 17 APR 2025