

|  |                        |   |
|--|------------------------|---|
| WAAS<br>CH <b>93732</b><br><b>W32A</b> | APP CRS<br><b>322°</b> | Rwy Idg<br>TDZE <b>1130</b><br>Apt Elev <b>1136</b> |
|--|------------------------|---|

# RNAV (GPS) RWY 32

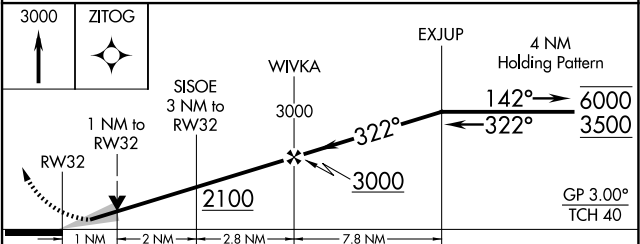
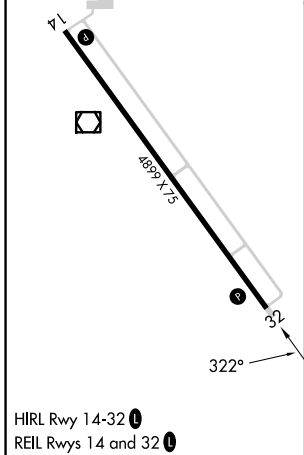
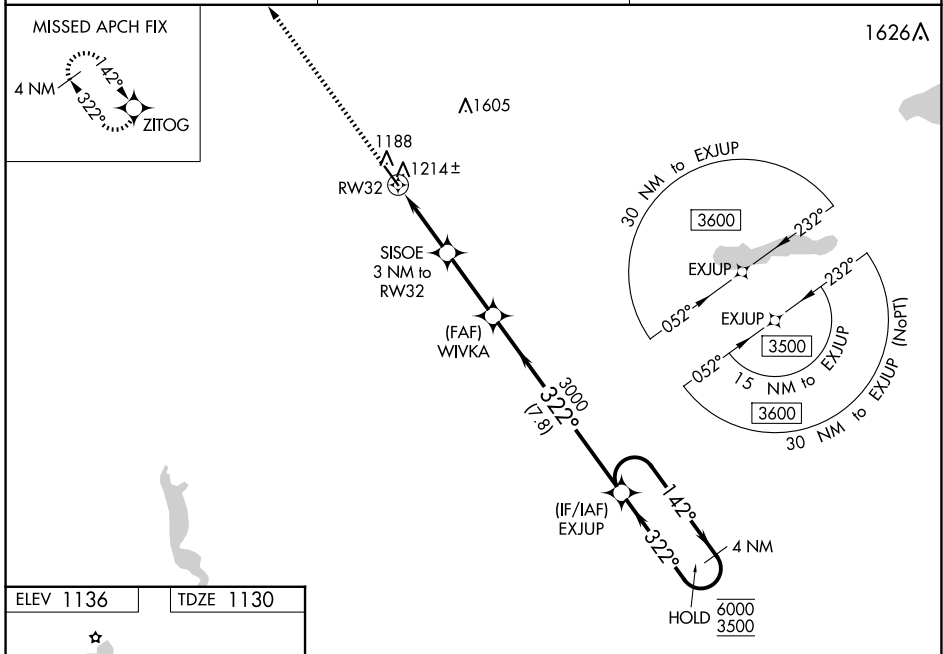
MORRIS MUNI/CHARLIE SCHMIDT FLD (MOX)

RNP APCH - GPS.

**⚠** Baro-VNAV and VDP NA when using BBB altimeter setting. For uncompensated Baro-VNAV systems, LNAV/VNAV NA below -17°C or above 54°C. When local altimeter setting not received, use BBB altimeter setting and increase LPV DA to 1380 feet and LNAV/VNAV DA to 1477 feet. Increase all MDAs 60 feet and visibility LNAV Cat C ½ SM and visibility Circling Cat C ¼ SM.

MISSED APPROACH: Climb to 3000 direct ZITOG and hold.

|                          |  |                                 |
|--------------------------|--|---------------------------------|
| AWOS-3PT<br><b>118.6</b> | MINNEAPOLIS CENTER<br><b>126.1 269.2</b> | UNICOM<br><b>122.8 (CTAF) 1</b> |
|--------------------------|--|---------------------------------|



| CATEGORY          | A                     | B                     | C                     | D  |
|-------------------|-----------------------|-----------------------|-----------------------|----|
| LPV DA            |                       | 1330-1                | 200 (200-1)           | NA |
| LNAV/VNAV DA      |                       | 1419-1                | 289 (300-1)           | NA |
| LNAV MDA          |                       | 1480-1                | 350 (400-1)           | NA |
| <b>C</b> CIRCLING | 1560-1<br>424 (500-1) | 1600-1<br>464 (500-1) | 1860-2<br>724 (800-2) | NA |

NC-1, 20 MAR 2025 to 17 APR 2025

NC-1, 20 MAR 2025 to 17 APR 2025