

| | | | |
|---|------------------------|---|---|
| VOR/DME MOX 109.6 Chan 33 | APP CRS 315° | Rwy Idg TDZE 1130 Apt Elev 1136 | 4899 1130 1136 |
|---|------------------------|---|---|

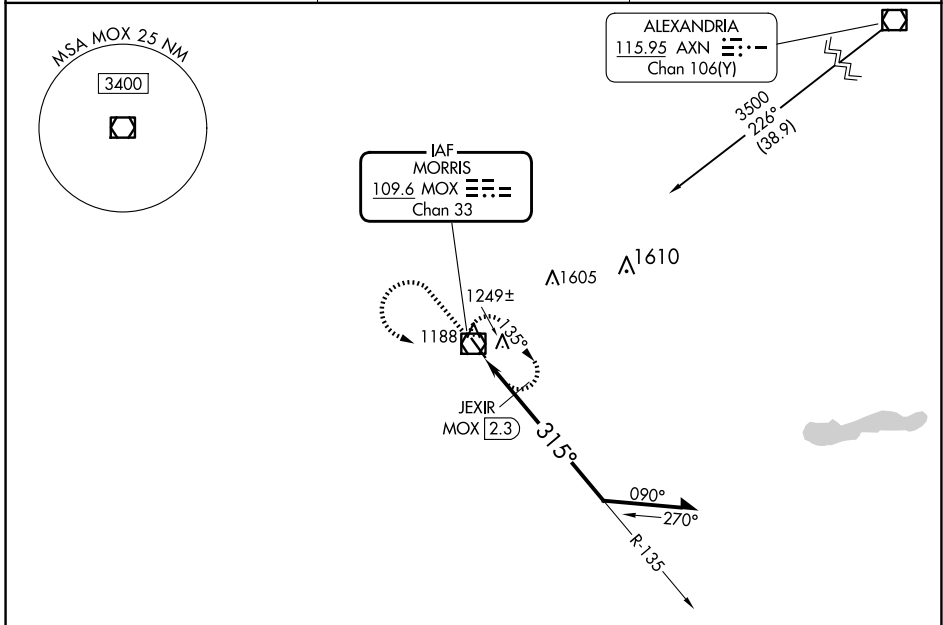
VOR RWY 32

MORRIS MUNI/CHARLIE SCHMIDT FLD (MOX)

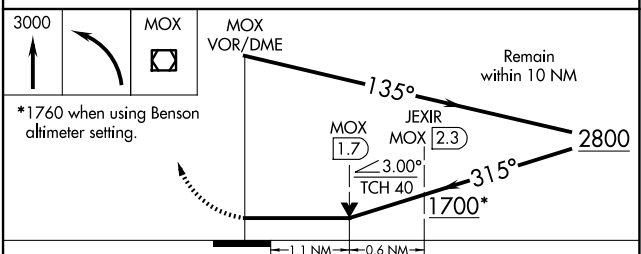
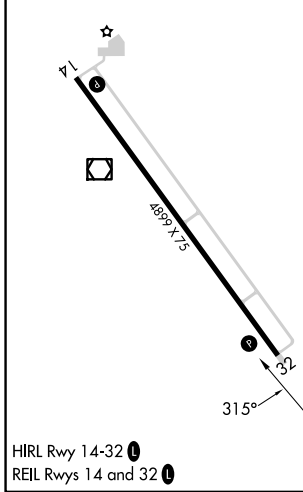
NA VDP NA when using BBB altimeter setting. When local altimeter setting not received, use BBB altimeter setting and increase all MDA's 60 feet and increase S-32 visibility Cat C 1/8 SM and Circling visibility Cat C 1/4 SM; increase JEXIR fix minimums S-32 and Circling visibility Cat C 1/4 SM.

MISSED APPROACH: Climb to 3000 then left turn direct MOX VOR/DME and hold.

| | | |
|--------------------------|--|---------------------------------|
| AWOS-3PT 118.6 | MINNEAPOLIS CENTER 126.1 269.2 | UNICOM 122.8 (CTAF) 0 |
|--------------------------|--|---------------------------------|



| | |
|-----------|-----------|
| ELEV 1136 | TDZE 1130 |
|-----------|-----------|



| CATEGORY | A | B | C | D |
|--------------------|-----------------------|-----------------------|-------------------------------|----|
| S-32 | 1700-1 | 570 (600-1) | 1700-1 5/8 570 (600-1 5/8) | NA |
| C CIRCLING | 1700-1 | 564 (600-1) | 1860-2 724 (800-2) | NA |
| JEXIR FIX MINIMUMS | | | | |
| S-32 | 1500-1 370 (400-1) | | | NA |
| C CIRCLING | 1560-1 424 (500-1) | 1600-1 464 (500-1) | 1860-2 724 (800-2) | NA |

NC-1, 20 MAR 2025 to 17 APR 2025

NC-1, 20 MAR 2025 to 17 APR 2025