

RNAV (GPS) RWY 18

NACOGDOCHES A L MANGHAM JR RGNL (OCH)

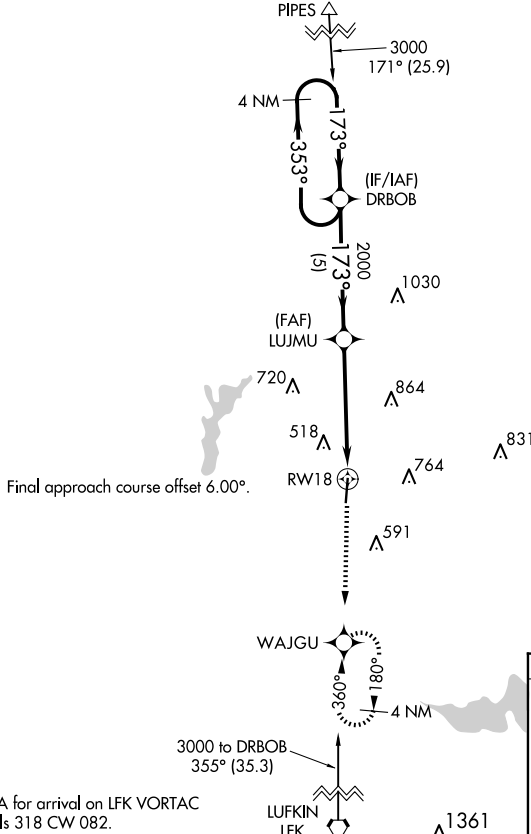
APP CRS 173°	Rwy ldg 5000
	TDZE 343
	Apt Elev 343

RNP APCH-GPS.

⚠ Rwy 18 helicopter visibility reduction below 1 SM NA. When local altimeter setting not received, use Lufkin altimeter setting and increase all MDA 60 feet and visibility LNAV Cat C and Circling Cat C ¼ SM.

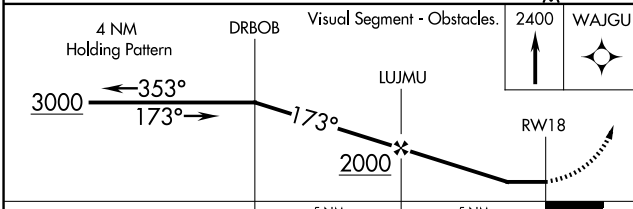
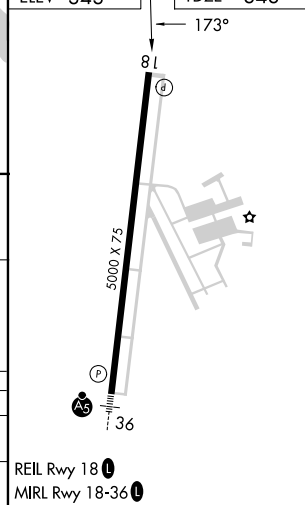
MISSED APPROACH: Climb to 2400 direct WAJGU and hold.

AWOS-3PT 135.625	HOUSTON CENTER 125.175 285.575	UNICOM 123.0(CTAF) 0
----------------------------	--	--------------------------------



Procedure NA for arrival on LFK VORTAC airway radials 318 CW 082.

ELEV 343	TDZE 343
----------	----------



CATEGORY	A	B	C	D
LNAV MDA	980-1	637 (700-1)	980-1¾ 637 (700-1¾)	NA
CIRCLING	980-1	637 (700-1)	1080-2 737 (800-2)	NA

RNAV (GPS) RWY 18

SC-5, 20 MAR 2025 to 17 APR 2025

SC-5, 20 MAR 2025 to 17 APR 2025