

WAAS CH 93528 W36A	APP CRS 359°	Rwy Idg TDZE Apt Elev	5000 343 343
--	------------------------	-----------------------------	---

RNAV (GPS) RWY 36

NACOGDOCHES A L MANGHAM JR RGNL (OCH)

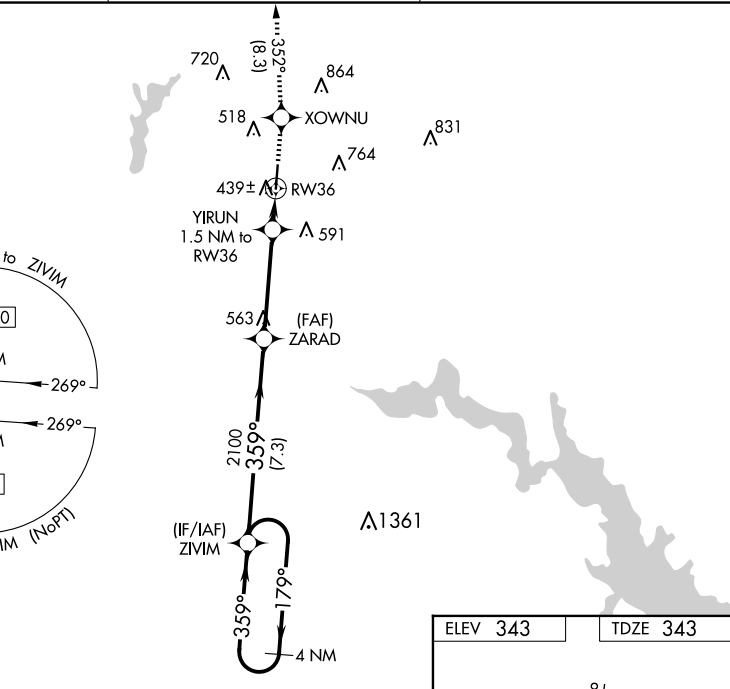
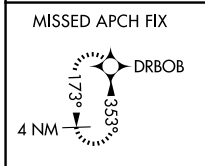
RNP APCH-GPS.

Baro-VNAV NA when using Lufkin altimeter setting. For uncompensated Baro-VNAV systems, LNAV/VNAV NA below -15°C or above 54°C. When local altimeter setting not received, use Lufkin altimeter setting: increase LPV DA to 599 feet, LNAV/VNAV DA to 681 feet, and visibility LNAV/VNAV all Cats 1/2 SM, increase all MDA 60 feet and visibility LNAV Cat C 1/2 SM and Circling Cat C 1/2 SM.



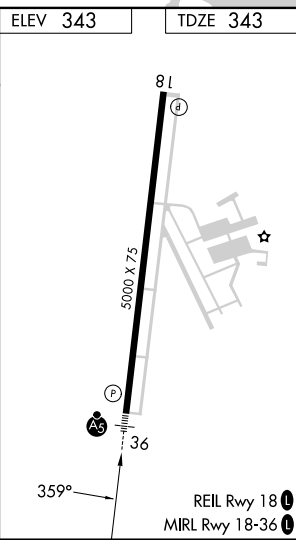
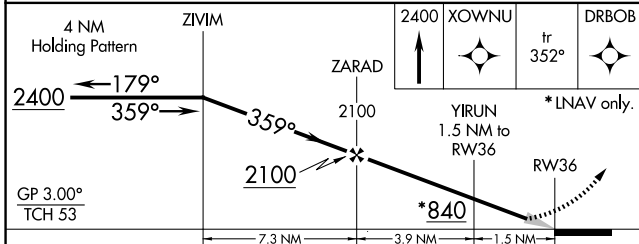
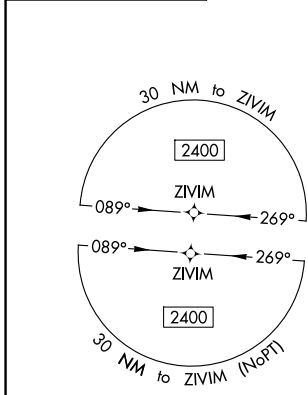
MISSED APPROACH: Climb to 2400 direct XOWNU and on track 352° to DRBOB and hold.

AWOS-3PT 135.625	HOUSTON CENTER 125.175 285.575	UNICOM 123.0 (CTAF)
----------------------------	--	-------------------------------



SC-5, 20 MAR 2025 to 17 APR 2025

SC-5, 20 MAR 2025 to 17 APR 2025



CATEGORY	A	B	C	D
LPV DA	543-1/2	200 (200-1/2)		NA
LNAV/VNAV DA	625-1/2	282 (300-1/2)		NA
LNAV MDA	700-1/2	357 (400-1/2)	700-5/8 357 (400-5/8)	NA
CIRCLING	860-1	517 (600-1)	1080-2 737 (800-2)	NA