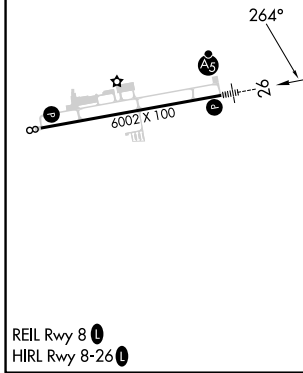
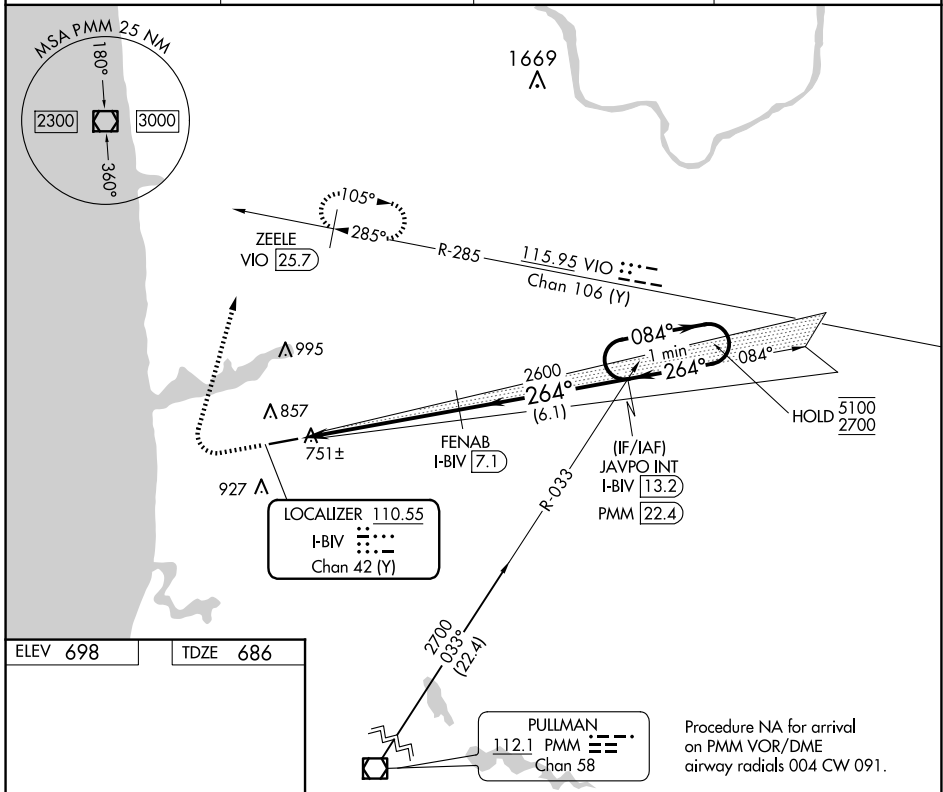


LOC/DME I-BIV <b>110.55</b> Chan 42 (Y)	APP CRS <b>264°</b>	Rwy Idg 6002	TDZE 686	Apt Elev 698
---	------------------------	-----------------	-------------	-----------------

# ILS or LOC RWY 26

WEST MICHIGAN RGNL (BIV)

DME required. ▲ NA		MALSR ▲ 6	MISSED APPROACH: Climb to 1500 then climbing right turn to 2600 on heading 020° and VIO VOR/DME R-285 to ZEELE/VIO 25.7 DME and hold.	
ASOS <b>119.025</b>	GREAT LAKES APP CON* <b>133.825 290.35</b>	CLNC DEL <b>123.95</b>	UNICOM <b>123.05 (CTAF) 0</b>	



1500	2600	ZEELE VIO R-285 VIO 25.7	FENAB I-BIV 7.1	JAVPO INT I-BIV 13.2	One Minute Holding Pattern
*LOC only		*I-BIV 2.1	2600	2600	5100 / 2700
0.9 NM		5 NM	6.1 NM	GS 3.00° TCH 32	
CATEGORY	A	B	C	D	
S-ILS 26	886-1/2 200 (200-1/2)		NA		
S-LOC 26	1020-1/2 334 (400-1/2)		NA		
CIRCLING	1200-1 502 (600-1)	1240-1 542 (600-1)	1240-1 1/2 542 (600-1 1/2)	NA	

EC-1, 20 MAR 2025 to 17 APR 2025

EC-1, 20 MAR 2025 to 17 APR 2025